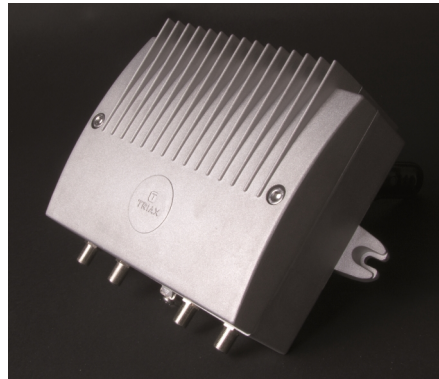


## GPV 950 amplifier w/ active RC, 85...1006MHz

Art. Number 323170



### High Output Distribution Amplifier with active return path

GPV 950 are high output Distribution Amplifiers for use in CATV distribution networks in multi-dwelling premises primarily. Switching of the basic gains enables to configure the amplifiers as line extender or as cascade amplifier in trunk position. All functional parts and setting elements are implemented on the printed board. Thus you do not need external accessories for configuration and operation of the amplifier in generally. That basic type is mains fed via Euro-plug.

### All features at glance

- One-board technology: all functionalities on one board implemented
- Rotary switches in 1 dB steps for settings of attenuation and equalization
- Downstream: 85...1006 MHz by max. output level 113 dB $\mu$ V
- Upstream: 5-65 MHz, max. output 120 dB $\mu$ V (high load performance for DOCSIS 3.x, KDG-Class D)
- Basic gain selectable via jumpers
- Return path mode selectable: active / passive / off
- Integrated cablesimulator
- State of the art 1 GHz technology
- Excellent and stable amplifier characteristics
- Low power consumption because of high efficient switching PSUs
- Extensive ESD and surge protection

## Technical Specifications

### ORDER INFORMATION

EAN Number 5702663231702

### CHARACTERISTICS

Output level CSO @ 60 dB IMD (42 ch) flat   dB $\mu$ V	114/116 dB $\mu$ V
Output level CTB @ 60 dB IMD (42 ch) flat   dB $\mu$ V	113/115 dB $\mu$ V
Output level return path   dB $\mu$ V	120 dB $\mu$ V



## Technical Specifications

### FREQUENCY RANGE

Frequency range   MHz	85...1006 MHz
Frequency response   dB	± 1.0 dB

### GAIN

Slope - Interstage   dB	DS 0/3/7/10, US 0/3/6/9 dB
Gain forward - Interstage   dB	41/33 dB dB
Gain return (@60 MHz)   dB	32/26 dB

### LOSS

Equalization	0...15 dB, 1 dB steps by rotary switches
Attenuation forward - line equalizer at input   dB	41 dB

### OPERATIONAL

IP Housing protection class	IP 65
Insulation Class	II

### CONNECTORS

Number of outputs	1
RF connector - Test point input: bi-directional   dB	-20 dB
RF connector - Test point output: directional   dB	-20 dB

### MECHANICAL

Main material	Zinc diecast
Weight (kg) TB(D)   kg	1.4 kg
Colour	Silver
Product Height   mm	145 mm
Product Width   mm	180 mm
Product Depth   mm	70 mm
Packaging Height   m	0.240 m
Packaging Width   m	0.170 m
Packaging Depth   m	0.078 m
Packaging Volume   m <sup>3</sup>	0.003 m <sup>3</sup>
Net Weight   kg	1.600 kg
Tara Weight   kg	0.150 kg
Total Weight   kg	1.750 kg