



TRIAX

connecting the future

TRIAX[®] Cables

Futureproof. Fire safe. Superior quality cables for the most demanding networks



[triax.com](https://www.triax.com)



TRIAX



Reliability is our business. It's what we stand for.

For nearly 70 years, TRIAX has strived to be your preferred partner for all your connectivity needs. We're proud to provide reliable solutions for the present, while connecting our customers to the future.

At the forefront of technological trends and developments, we're with you each step of the way, from installing home connections and business critical hospitality solutions, to realising complex, large scale integrations.

Ready for any job at hand, our products are available individually or as part of tailor-made

solutions. From aerials and dishes, to headends, outlets, cables and beyond – we make connectivity easy, ensuring you live up to your own customer promises.

Rest assured that at TRIAX, reliability and innovation run through the core of everything we do, from product development to our friendly, efficient service and support.

So enjoy browsing through this catalogue for an overview of our full product range. And of course, we're always just a phone call away for more inspiration towards your next solution.

Contact TRIAX

To place an order or consult one of our experts, contact us via:

Phone: +45 76 82 22 00

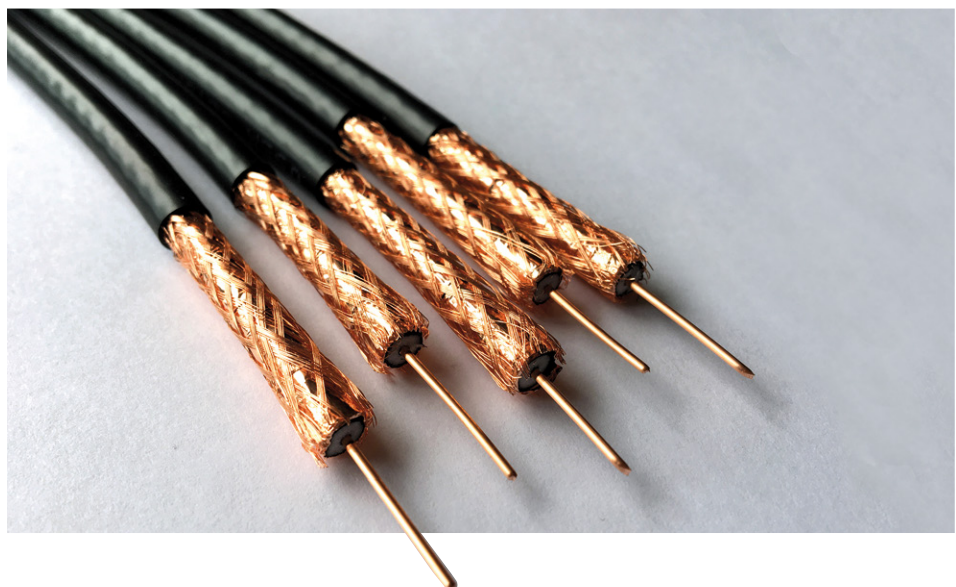
e-mail: triax@triax.com

Or pay us a visit online at www.triax.com, where you'll find a wealth of further material about our products and solutions.

TRIAX[®] Cables

Superior quality cables for the most demanding networks

Content	Page
Indoor/Outdoor	
■ KOKA 80 / 600A	6-7
■ KOKA 99 HD plus	8-9
■ KOKA 110 A+ and KOKA 110 A++	10-11
■ KOKA 6 / F6 plus	12-13
■ KOKA 30 / 50 / 780 twin and RG11 plus	14-15
■ KOKA 6 / RG6 / RG11	16-17
■ Multi colour cables	18-19
CAT cables	20-21
HDMI cables	24-25
Fly Leads (RF-cables)	26-27
Connection cables	28-29
Connectors	
■ F-compression	30-31
■ F-push on and Self install	32
■ F-crimp	33
■ F-twist on	34
■ IEC types	35
Adaptors	
■ F-types	36
■ IEC-types	37
Tools	38-39
Accessories	40



TRIAX® Cables

Futureproof. Fire safe.



Superior quality cables for the most demanding networks

TRIAX cables are designed to meet the standards of today and the network demands of tomorrow.

Specially crafted and highly shielded to minimise interference, each one has been meticulously updated and rigorously tested to conform to the new EN50575 fire safety standard.

Maximum performance

Our cables are highly suited for the most demanding installations. Just take our flagship KOKA 110 coaxial cable as an example, which offers:

- The highest levels of interference protection
- Crystal clear HD & 4K TV images
- Up- and downstream data transmission
- Exceptional build quality and durability
- Safety in case of fire

Maximum safety – EN50575 compliant

All TRIAX cables are fully tested and classified according to the EN50575 Construction Products Regulation, in force from 1 July 2017, so they:

- Meet the highest demands for safety in case of fire
- Are safe and suitable for all building projects across the EU and the world

About Construction Products Regulation (EU) No 305/2011

This regulation, coming into force for cables from 1 July 2017, identifies a number of basic requirements to be met by products, including cables, used in construction works. One of these requirements, EN50575:2014+A1:2016, is 'safety in case of fire'.

All cables sold within the EU for the construction market must be CE marked, to show that they have been tested and classified accordingly and therefore meet these mandatory standards.

EN50575 defines a number of classes – Aca, B1ca, B2ca, Cca, Dca, Eca and Fca – which specify how a cable reacts to fire, based on heat release and the spread of flames. The classes and respective test methods are presented in the following table:

CE markings for cables

In order to obtain the mandatory CE mark for cables, manufacturers must draw up a Declaration of Performance (DoP).

This must be made available in the language of each EU country where the product is to be sold, and contain specific information such as product identification, its intended use, and its declared performance.

The DoP – and consequently the CE mark - can only be issued once the product has been thoroughly and independently tested by a 'notified body,' i.e. an entity that has been accredited by an EU Member State to make the required assessments.

TRIAX[®] fire safe cables

CE marked, meeting the new EU fire standard

	Euro-Class	Contribution to a fire	AVCP System	Additional test	Assessment and certification process
Not applicable to Data cables	A _{ca}	No contribution	1+	Smoke Acidity Droplet	<i>Notified body issues attestation of conformity after:</i> <ul style="list-style-type: none"> ■ Initial type test ■ Factory audit ■ Biannual production inspection ■ Annual audit test on samples taken from warehouse
	B1 _{ca}	Minimum contribution			
Data Cables for indoor application	B2 _{ca}	Very limited contribution			
	C _{ca}	Limited contribution			
	D _{ca}	Average contribution			
Not acceptable in the buildings	E _{ca}	High contribution	3	–	<i>Notified body issues attestation of conformity after:</i> Initial type test
	F _{ca}	Undetermined fire properties	4	–	<i>Self-declaration by Manufacturer</i>

TRIAX cables: fully tested and CE marked

We are happy to assure our customers that all TRIAX cables are now stamped with the CE mark, and the necessary DoPs are available for each product line. The cables have been variously classified B2ca, Cca, Dca & Eca, meeting all statutory demands, and satisfying the recommendations of ZVEI, the German Electrical and Electronic Manufacturers' Association.

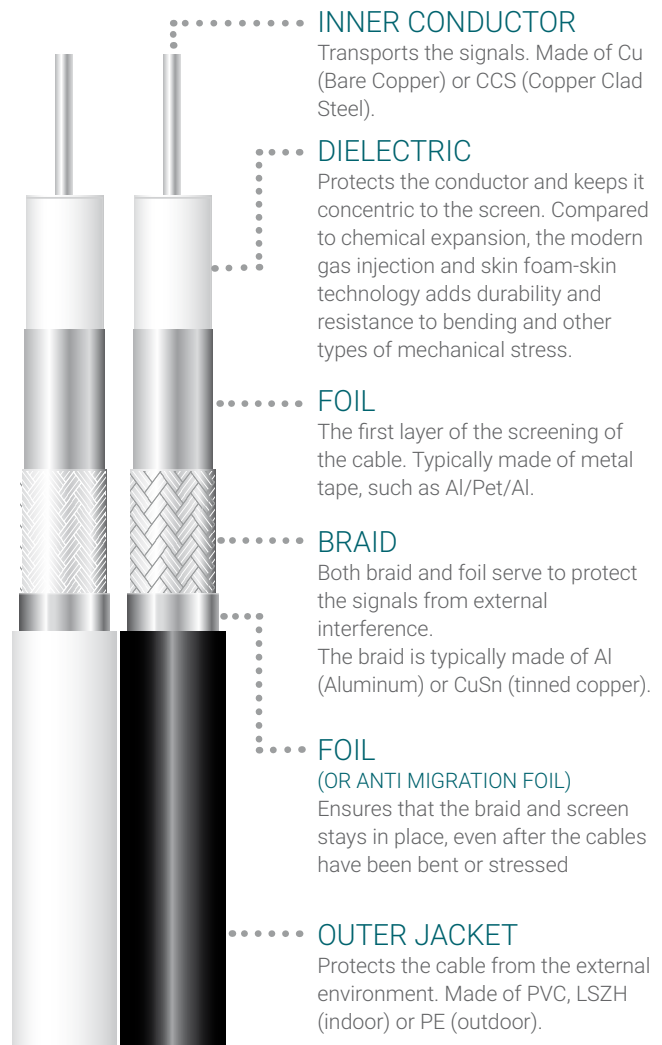
Shielding of the cables is carried out according to EN 50117-2-X standard

EN 50117 Class	Transfer Impedance	Screening attenuation MHz		
MHz	5–30	30–1000	1000–2000	2000–3000
Class C	< 50 mΩ/m	> 75 dB	> 65 dB	> 55 dB
Class B	< 15 mΩ/m	> 75 dB	> 65 dB	> 55 dB
Class A	< 5.0 mΩ/m	> 85 dB	> 75 dB	> 65 dB
Class A+	< 2.5 mΩ/m	> 95 dB	> 85 dB	> 75 dB
Class A++	< 0.9 mΩ/m	> 105 dB	> 95 dB	> 85 dB

List of abbreviations

Legend	
AL	Aluminium
AL/PET	Aluminium/Polyester
AL/PET/AL	Aluminium/Polyester/Aluminium
CU	Plain copper
CUSN	Tinned Copper
LSZH	Low smoke zero halogen
PE	Polyethylene
PVC	Polyvinylchloride
SRL	Structural return loss

TRIAX cable range optimised for digital reception.



TRIAX® KOKA 80 Plus, KOKA 600 cable range

for indoor and outdoor installation



TRIAX KOKA 80 Plus PVC/PE cable

The TRIAX KOKA 80 Plus is a premium cable for all types of indoor and outdoor installation. Due to the full copper inner conductor, the signal loss in the cable is very low and thereby less amplification is required in your installation.

For outdoor installations, we highly recommend the coax cables with PE jacket, as this material is simply more resistant to weather conditions.

TRIAX KOKA 600 LSZH cable

TRIAX KOKA 600 is a premium cable for all types of indoor installation. Due to full copper inner conductor, the signal loss in the cable is very low and thereby less amplification is required in your installation.



KOKA 80 Plus, PVC white, 100m reel

Art. No. 150261

EAN Number
5702661502613



KOKA 80 Plus, PE black, 100m reel

Art. No. 150266

EAN Number
5702661502668



KOKA 80 Plus, PE black, 250m reel

Art. No. 150267

EAN Number
5702661502675



youSee
ready
15.06.2017

Stofa:
approved

KOKA 600, LSZH, white, 100m reel

Art. No. 150661

EAN Number
5702661506611



youSee
ready
15.06.2017

Stofa:
approved

KOKA 600, LSZH, white, 250m reel

Art. No. 150662

EAN Number
5702661506628



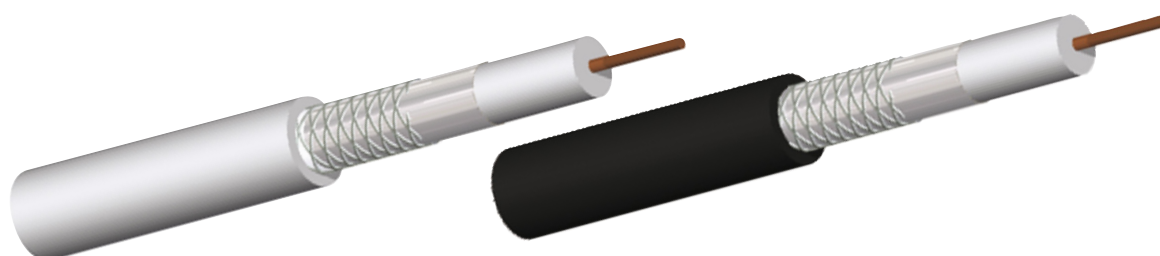
KOKA 600, LSZH white, 250m Pull box

Art. No. 150663

EAN Number
5702661506635

TRIAX[®] fire safe cables

CE marked, meeting the new EU fire standard



Type:	KOKA 80 Plus PVC white 100m reel	KOKA 80 Plus PE black 100/250m reel	KOKA 600 A LSZH white 100/250/250m
Art. no.	150261	150266/150267	150661/150662/150663
CONSTRUCTION			
Inner conductor - material	Cu	Cu	Cu
Inner conductor - dimension	1.02 ± 0.01mm	1.02 ± 0.01mm	1.13mm
Dielectric - material	PE gas injected	PE gas injected	PE gas injected
Dielectric - dimension	4.8 ± 0.05mm	4.8 ± 0.05mm	4.80 ± 0.05mm
Shield (First) foil 1 – material	Al/P bonded foil	Al/P bonded foil	Al/Pet bonded
Shield (First) foil 1 – overlap	20%	20%	20%
Shield (Second) – braid material	CuSn	CuSn	CuSn
Shield (Second) – braid dimension	0,10x4x16mm	0,10x4x16mm	0.10x6x24mm
Shield (Second) – braid coverage	> 37%	> 37%	72%
Jacket – dimension	6.8 ± 0.1mm	6.8 ± 0.1mm	6.8 ± 0.1mm
Jacket - material	UV resistance PVC	UV resistance PVC	UV resistance LSZH
SHIELDING			
Screening attenuation @ 30-1000 MHz	> 78dB	> 78dB	> 85.0dB
Screening attenuation @ 1000-2000 MHz	> 95dB	> 95dB	> 90.0dB
Screening attenuation @ 2000-3000 MHz	> 105dB	> 105dB	> 80.0dB
TRANSFER IMPEDANCE			
Transfer Impedance @ 5-30 MHz	< 24mΩ/m	< 24mΩ/m	< 5mΩ/m
LOSS			
Attenuation (at 20°C) @ 5 MHz	2,1dB	2,1dB	1.6dB
Attenuation (at 20°C) @ 50 MHz	4,3dB	4,3dB	4.2dB
Attenuation (at 20°C) @ 200 MHz	8,8dB	8,8dB	8.2dB
Attenuation (at 20°C) @ 470 MHz	13,8dB	13,8dB	12.8dB
Attenuation (at 20°C) @ 862 MHz	19,1dB	19,1dB	17dB
Attenuation (at 20°C) @ 1000 MHz	20,7dB	20,7dB	18.9dB
Attenuation (at 20°C) @ 1350 MHz	24,4dB	24,4dB	22.4dB
Attenuation (at 20°C) @ 1750 MHz	28,8dB	28,8dB	25.5dB
Attenuation (at 20°C) @ 2150 MHz	31,6dB	31,6dB	28.7dB
RETURN LOSS			
Structural return loss @ 5-470 MHz	> 30dB	> 30dB	> 26dB
Structural return loss @ 470-1000 MHz	> 31dB	> 31dB	> 23dB
Structural return loss @ 1000-2400 MHz	> 31dB	> 31dB	dB
Structural return loss @ 2000-3000 MHz	> 31dB	> 31dB	> 20dB
ELECTRICAL			
Impedance	75 ± 3Ω	75 ± 3Ω	75 ± 3Ω
Capacity	52 ± 1pF/m	52 ± 1pF/m	52 ± 3pF/m
Velocity ratio	82%	82%	82%
Inner DC resistance	< 21Ω/km	< 21Ω/km	< 18Ω/km
Outer DC resistance	< 23Ω/km	< 23Ω/km	< 13Ω/km
OPERATIONAL			
Application	Indoor	Outdoor	Indoor
Fire Class	E _{ca}	F _{ca}	C _{ca}
MECHANICAL			
Tensile Strength - Outer Conductor 1 (∅)			230N/mm ²
Colour	White	Black	White
Length (m)	100m	100/250m	100/250/250m
Minimum bending radius - single/repeated	35/70mm	35/70mm	35/70mm

TRIAX® KOKA 99 HD Plus cable range

optimised to meet your needs



TRIAX KOKA 99 HD Plus LSZH / PVC cable

TRIAX KOKA 99 HD Plus is a premium cable for all types of indoor installation. Due to the full copper inner conductor, the signal loss in the cable is very low and thereby less amplification is required in your installation.

For outdoor installations, we highly recommend the coax cables with PE jacket, as this material is simply more resistant to weather conditions.



**KOKA 99 HD Plus
LSZH white
100m reel**

Art. No. 151706

EAN Number
5702661517068



**KOKA 99 HD Plus
LSZH white
250m reel**

Art. No. 151707

EAN Number
5702661517075



**KOKA 99 HD Plus
LSZH white
500m drum**

Art. No. 151708

EAN Number
5702661517082



**KOKA 99 HD Plus
PVC white
100m reel**

Art. No. 151701

EAN Number
5702661517013



**KOKA 99 HD Plus
PVC white
250m reel**

Art. No. 151702

EAN Number
5702661517020



**KOKA 99 HD Plus
PVC white
250m Pullbox**

Art. No. 151703

EAN Number
5702661517037



**KOKA 99 HD Plus
PVC white
500m drum**

Art. No. 151705

EAN Number
5702661517051

TRIAX[®] fire safe cables

CE marked, meeting the new EU fire standard

Type:	KOKA 99 HD Plus LSZH white 100/250/500m	KOKA 99 HD Plus PVC white 100/250/500m	KOKA 99HD Plus PVC white 250m Pullbox 151703
Art. no.	151706/151707/151708	151701/151702/151705	151703
CONSTRUCTION			
Inner conductor - material	Cu	Cu	Cu
Inner conductor - dimension	1.02 ± 0.02mm	1.02 ± 0.01mm	1.02 ± 0.01mm
Dielectric - material	PE gas injected	PE gas injected	PE gas injected
Dielectric - dimension	4.6 ± 0.05mm	4.57 ± 0.1mm	4.57 ± 0.1mm
Shield (First) foil 1 – material	Al/Pet/Al - bonded	Al/Pet/Al - bonded	Al/Pet/Al - bonded
Shield (First) foil 1 – overlap	20%	20%	20%
Shield (Second) – braid material	Al	Al	Al
Shield (Second) – braid dimension	0,12x6x16mm		
Shield (Second) – braid coverage	62%	77%	77%
Third shield – foil 2 – material	Al/Pet	Al/Pet	Al/Pet
Jacket – dimension	6.8 ± 0.1mm	6.9 ± 0.1mm	6.9 ± 0.1mm
Jacket - material	UV resistance LSZH	PVC	PVC
SHIELDING			
Screening attenuation @ 30-1000 MHz	≥ 105dB	≥ 105dB	≥ 105dB
Screening attenuation @ 1000-2000 MHz	≥ 100dB	≥ 100dB	≥ 100dB
Screening attenuation @ 2000-3000 MHz	≥ 100dB	≥ 100dB	≥ 100dB
TRANSFER IMPEDANCE			
Transfer Impedance @ 5-30 MHz	≤ 5mΩ/m	≤ 5mΩ/m	≤ 5mΩ/m
LOSS			
Attenuation (at 20°C) @ 5 MHz	1.7dB	1.9dB	1.9dB
Attenuation (at 20°C) @ 50 MHz	4.6dB	4.6dB	4.6dB
Attenuation (at 20°C) @ 200 MHz	8,6dB	9,0dB	9,0dB
Attenuation (at 20°C) @ 470 MHz	13.6dB	13.5dB	13.5dB
Attenuation (at 20°C) @ 800 MHz		18.3dB	18.3dB
Attenuation (at 20°C) @ 862 MHz	18.8dB	18.8dB	18.8dB
Attenuation (at 20°C) @ 1000 MHz	20.3dB	20.3dB	20.3dB
Attenuation (at 20°C) @ 1350 MHz	24,5dB	23.6dB	23.6dB
Attenuation (at 20°C) @ 1600 MHz		26.2dB	26.2dB
Attenuation (at 20°C) @ 1750 MHz	27.2dB	27.3dB	27.3dB
Attenuation (at 20°C) @ 2150 MHz	30.6dB	30.8dB	30.8dB
RETURN LOSS			
Structural return loss @ 5-470 MHz	>26dB	> 23dB	> 23dB
Structural return loss @ 470-862 MHz			
Structural return loss @ 470-1000 MHz	>23dB	> 20dB	> 20dB
Structural return loss @ 862-2400 MHz			
Structural return loss @ 1000-2000 MHz	>20dB	> 18dB	> 18dB
Structural return loss @ 1000-2400 MHz			
Structural return loss @ 2000-3000 MHz	>20dB	> 16dB	> 16dB
ELECTRICAL			
Insulation Resistance	>10000MΩ/km		
Impedance	75 ± 3Ω	75 ± 3Ω	75 ± 3Ω
Capacity	52 ± 2pF/m	53 ± 2pF/m	53 ± 2pF/m
Velocity ratio	84%	83 ± 1%	83 ± 1%
Inner DC resistance	<22.5Ω/km	≤ 21.5Ω/km	≤ 21.5Ω/km
Outer DC resistance	<20Ω/km	<15Ω/km	<15Ω/km
Conductor DC resistance @ 20°C	Ohm/km	Ohm/km	Ohm/km
Mutual capacity @ 1kHz	pF/m	pF/m	pF/m
OPERATIONAL			
Application	Indoor	Indoor	Indoor
Fire Class	C _{ca}	E _{ca}	E _{ca}
MECHANICAL			
Tensile Strength - Outer Conductor 1 (Ø)	230N/mm ²		
Colour	White	White	White
Length (m)	100/250/500m	100/250/500m	250m
Minimum bending radius - single/repeated	23/70mm	35/70mm	35/70mm

TRIAX® KOKA 110 A+ and A++ cable range

for indoor and outdoor installation



TRIAX KOKA 110 A+ LSZH / PVC cable



**KOKA 110 A+
PVC white
100m reel**

Art. No. 151611

EAN Number
5702661516115



**KOKA 110 A+
LSZH white
100m reel**

Art. No. 151616

EAN Number
5702661516160



**KOKA 110 A+
PVC white
250m reel**

Art. No. 151612

EAN Number
5702661516122



**KOKA 110 A+
LSZH white
500m drum**

Art. No. 151617

EAN Number
5702661516177



**KOKA 110 A+
PVC white
500m drum**

Art. No. 151615

EAN Number
5702661516153



**KOKA 110 A+
PE black
100m reel**

Art. No. 151613

EAN Number
5702661516139



**KOKA 110 A+
PVC white
250m Pullbox**

Art. No. 151620

EAN Number
5702661516207



**KOKA 110 A+
PE black
250m reel**

Art. No. 151614

EAN Number
5702661516146

TRIAX[®] fire safe cables

CE marked, meeting the new EU fire standard



**KOKA 110 A++
LSZH white
100m reel**

Art. No. 151618

**EAN Number
5702661516184**



**KOKA 110 A++
LSZH white
500m drum**

Art. No. 151619

**EAN Number
5702661516191**

Type:	KOKA 110 A+ PVC white 100/250/500 m	KOKA 110 A+ PVC white 250m Pullbox	KOKA 110 A+ LSZH white 100/500m	KOKA 110 A+ PE black 100/250 m	KOKA 110 A++ LSZH white 100/500 m
Art. no.	151611 / 151612 / 151615	151620	151616 / 151617	151613 / 151614	151618 / 151619
CONSTRUCTION					
Inner conductor - material	Cu	Cu	Cu	Cu	Cu
Inner conductor - dimension	1.02 ± 0.01mm	1.02 ± 0.01mm	1.02 ± 0.01mm	1.02 ± 0.01mm	1.05 ± 0.01mm
Dielectric - material	PE gas injected	PE gas injected	PE gas injected	PE gas injected	PE gas injected
Dielectric - dimension	4.6(+0.2-0.3)mm	4.6(+0.2-0.3)mm	4.6(+0.2-0.3)mm	4.6(+0.2-0.3)mm	4.65 ± 0.01mm
Shield (First) foil 1 – material	Al/Pet/Copolymer bonded	Al/Pet/Copolymer bonded	Al/Pet/Copolymer bonded	Al/Pet/Copolymer bonded	Al/Pet/Copolymer bonded
Shield (First) foil 1 – overlap	20%	20%	20%	20%	20%
Shield (Second) – braid material	CuSn	CuSn	CuSn	CuSn	CuSn
Shield (Second) – braid coverage	60%	60%	60%	60%	82%
Third shield – foil 2 – material	AL/Pet bonded	AL/Pet bonded	AL/Pet bonded	AL/Pet bonded	AL/Pet bonded
Jacket – dimension	6.8 ± 0.1mm	6.8 ± 0.1mm	6.8 ± 0.1mm	6.8 ± 0.1mm	6.9 ± 0.1mm
Jacket - material	PVC	PVC	LSZH	PE	LSZH
SHIELDING					
Screening attenuation @ 30-1000 MHz	≥ 120dB	≥ 120dB	≥ 120dB	≥ 120dB	≥ 110dB
Screening attenuation @ 1000-2000 MHz	≥ 120dB	≥ 120dB	≥ 120dB	≥ 120dB	≥ 105dB
Screening attenuation @ 2000-3000 MHz	≥ 120dB	≥ 120dB	≥ 120dB	≥ 120dB	≥ 100dB
TRANSFER IMPEDANCE					
Transfer Impedance @ 5-30 MHz	< 2.5mΩ/m	< 2.5mΩ/m	< 2.5mΩ/m	< 2.5mΩ/m	< 0,9mΩ/m
LOSS					
Attenuation (at 20°C) @ 5 MHz	1.5dB	1.5dB	1.5dB	1.5dB	1.5dB
Attenuation (at 20°C) @ 50 MHz					4,6dB
Attenuation (at 20°C) @ 200 MHz	9.0dB	9.0dB	9.0dB	9.0dB	9.0dB
Attenuation (at 20°C) @ 470 MHz	13.5dB	13.5dB	13.5dB	13.5dB	13.6dB
Attenuation (at 20°C) @ 862 MHz	18.8dB	18.8dB	18.8dB	18.8dB	19.5dB
Attenuation (at 20°C) @ 1000 MHz	20.3dB	20.3dB	20.3dB	20.3dB	21.0dB
Attenuation (at 20°C) @ 1350 MHz					24.1dB
Attenuation (at 20°C) @ 1750 MHz					27.8dB
Attenuation (at 20°C) @ 2150 MHz					31.2dB
Struc. return loss @ 5-470 MHz	≥ 25dB	≥ 25dB	≥ 25dB	≥ 25dB	≥ 26dB
Struc. return loss @ 470-1000 MHz	≥ 23dB	≥ 23dB	≥ 23dB	≥ 23dB	≥ 23dB
Struc. return loss @ 1000-2400 MHz	≥ 20dB	≥ 20dB	≥ 20dB	≥ 20dB	≥ 20dB
Struc. return loss @ 2000-3000 MHz					≥ 20dB
ELECTRICAL					
Impedance	75 ± 3Ω	75 ± 3Ω	75 ± 3Ω	75 ± 3Ω	75 ± 3Ω
Capacity	53 ± 2pF/m	53 ± 2pF/m	53 ± 2pF/m	53 ± 2pF/m	53 ± 2pF/m
Velocity ratio	83 ± 1%	83 ± 1%	83 ± 1%	83 ± 1%	83 ± 1%
Inner DC resistance	< 21.5Ω/km	< 21.5Ω/km	< 21.5Ω/km	< 21.5Ω/km	< 20Ω/km
Outer DC resistance	< 12.0Ω/km	< 12.0Ω/km	< 12.0Ω/km	< 12.0Ω/km	< 9,8Ω/km
OPERATIONAL					
Application	Indoor	Indoor	Indoor	Outdoor	Indoor
Fire Class	E _{ca}	E _{ca}	C _{ca}	F _{ca}	B2 _{ca}
MECHANICAL					
Colour	White	White	White	Black	White
Length (m)	100/250/500m	250m	100/500m	100/250m	100/500m

TRIAX® KOKA 6 and F6 Plus cable range

for indoor and outdoor installation



TRIAX KOKA 6 PVC white cable

TRIAX KOKA 6 is a premium cable for all types of indoor and outdoor installation. Due to the full copper inner conductor, the signal loss in the cable is very low and thereby less amplification is required in your installation.

For outdoor installations, we highly recommend the coax cables with PE jacket, as this material is simply more resistant to weather conditions.

TRIAX KOKA F6 Plus PVC white cable

TRIAX KOKA 600 is a premium cable for all types of indoor installation. Due to the full copper inner conductor, the signal loss in the cable is very low and thereby less amplification is required in your installation.



KOKA 6 - PVC white 100m reel

Art. No. 150121

EAN Number
5702661501210



KOKA F6 Plus PVC white 100m reel

Art. No. 151137

EAN Number
5702661511370



KOKA 6 - PVC white 250m reel

Art. No. 150122

EAN Number
5702661501227



KOKA F6 Plus PVC white 305m reel

Art. No. 151138

EAN Number
5702661511387



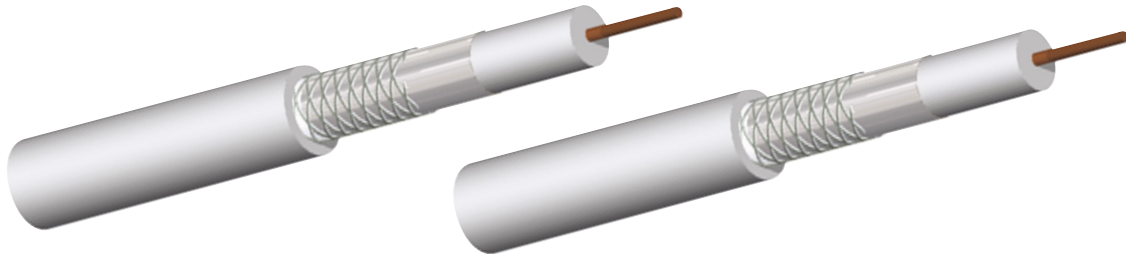
KOKA 6 - PVC white 305m reel

Art. No. 150129

EAN Number
5702661501296

TRIAX[®] fire safe cables

CE marked, meeting the new EU fire standard



Type:	KOKA 6 PVC white 100/250 m	KOKA 6 PVC white 305m reel	KOKA F6+ PVC white 100/305 m
Art. no.	150121 / 150122	150129	151137 / 151138
CONSTRUCTION			
Inner conductor - material	Cu	Cu	CCS
Inner conductor - dimension	1.02 ± 0.02mm	1.02 ± 0.02mm	1.02 ± 0.03mm
Dielectric - material	PE gas injected	PE gas injected	PE foam
Dielectric - dimension	4.8 ± 0.1mm	4.8 ± 0.1mm	4.57 ± 0.1mm
Shield (First) foil 1 – material	Al/P - unbonded	Al/P - unbonded	Al/Pet bonded
Shield (First) foil 1 – overlap	20%	20%	20%
Shield (Second) – braid material	Al wire	Al wire	Al
Shield (Second) – braid coverage	> 43%	> 43%	60 ± 3%
Third shield – foil 2 – material			Al/Pet
Jacket – dimension	6.8 ± 0.2mm	6.8 ± 0.2mm	6.9 ± 0.2mm
Jacket - material	PVC	PVC	PVC
SHIELDING			
Screening attenuation @ 30-1000 MHz	> 75dB	> 75dB	> 100dB
Screening attenuation @ 1000-2000 MHz	> 65dB	> 65dB	> 90dB
Screening attenuation @ 2000-3000 MHz	> 55dB	> 55dB	> 95dB
TRANSFER IMPEDANCE			
Transfer Impedance @ 5-30 MHz	< 15mΩ/m	< 15mΩ/m	mΩ/m
LOSS			
Attenuation (at 20°C) @ 5 MHz	1.9dB	1.9dB	2.4dB
Attenuation (at 20°C) @ 50 MHz	5.0dB	5.0dB	5.0dB
Attenuation (at 20°C) @ 200 MHz	9.63dB	9.63dB	9.0dB
Attenuation (at 20°C) @ 470 MHz	13.5dB	13.5dB	15.2dB
Attenuation (at 20°C) @ 862 MHz	20.01dB	20.1dB	19.0dB
Attenuation (at 20°C) @ 1000 MHz	21.49dB	21.49dB	21.5dB
Attenuation (at 20°C) @ 1350 MHz	23.5dB	23.5dB	25.3dB
Attenuation (at 20°C) @ 1750 MHz	26.5dB	26.5dB	28.4dB
Attenuation (at 20°C) @ 2150 MHz	31.2dB	31.2dB	30.8dB
RETURN LOSS			
Structural return loss @ 5-470 MHz	> 21dB	> 21dB	
Structural return loss @ 470-1000 MHz	> 21dB	> 21dB	> 21dB
Structural return loss @ 1000-2000 MHz	> 18dB	> 18dB	> 18dB
Structural return loss @ 2000-3000 MHz	> 16dB	> 16dB	> 16dB
ELECTRICAL			
Impedance	75 ± 3Ω	75 ± 3Ω	75 ± 3Ω
Capacity	53pF/m	53pF/m	pF/m
Velocity ratio	82%	82%	81%
Inner DC resistance	< 22Ω/km	< 22Ω/km	< 100Ω/km
Outer DC resistance	< 65Ω/km	< 65Ω/km	< 38Ω/km
OPERATIONAL			
Application	Indoor	Indoor	Indoor
Fire Class			E _{ca}
MECHANICAL			
Colour	White	White	White
Length (m)	100/250m	305m	100/305m
Minimum bending radius - single/repeated	23/70mm	23/70mm	23/70mm

TRIAX® KOKA 30/50/780 and RG11 cables

for indoor and outdoor installation



Triax KOKA 30/50 and KOKA 780 Twin

is a universal coaxial cable for in-house TV broadcast cabling. Due to the full copper inner conductor, the signal loss in the cable is low so less amplification is required in your installation.

KOKA 780 is a Twin cable for SAT-IF cable systems, for use with 3 or 4-output outlets.

Triax RG 11 Plus

are ideal for entry point feed systems running to a building and applications to each floor of residential buildings. The RG 11s are durable quality cables offering high stability for many years to come. To protect the signals from interferences, the cables are engineered with a high shielding efficiency – Class A according to EN 50117.



KOKA 30
PVC white
100m reel

Art. No. 150001

EAN Number
5702661500015



RG11 Plus
PE black 10.2mm
500m drum

Art. No. 150240

EAN Number
5702661502408



KOKA 50
PVC white
100m reel

Art. No. 150151

EAN Number
5702661501517



RG11 Plus LSZH
White 10.2mm
500m drum

Art. No. 150241

EAN Number
5702661502415



KOKA 780 Twin
PVC white
100m coil

Art. No. 150004

EAN Number
5702661500046

TRIAX[®] fire safe cables

CE marked, meeting the new EU fire standard

Type:	KOKA 30	KOKA 50	KOKA 780 Twin	RG11 Plus	RG11 Plus
	PVC white	PVC white	PVC white	PE black	LSZH white
	100m reel	100m reel	100 coil	500m	500m
Art. no.	150001	150151	150004	150240	150241
CONSTRUCTION					
Inner conductor - material	Cu	Cu	Cu	Cu	Cu
Inner conductor - dimension	0.41 ± 0.02mm	0.8 ± 0.02mm	0.8mm	1.7 ± 0.01mm	1.7 ± 0.01mm
Dielectric - material	PE gas injected	PE gas injected	PEG	PEG	PEG
Dielectric - dimension	1.9 ± 0.1mm	3.5 ± 0.1mm	3.5mm	7.2 ± 0.05mm	7.2 ± 0.05mm
Shield (First) foil 1 – material	Al/Pet/Al tape - unbonded	Al/Pet/Al tape - unbonded	Al/Pet/Al tape	Al/Pet/Al tape	Al/Pet/Al tape
Shield (First) foil 1 – overlap	20%	20%			
Shield (Second) – braid material	CuSn	CuSn	CuSn	CuSn	CuSn
Shield (Second) – braid coverage	58%	> 45%	65%	55%	55%
Third shield – foil 2 – material				Al/Pet	Al/Pet
Jacket – dimension	3.6 ± 0.1mm	5.0 ± 0.15mm	2 x 5 ± 0.2mm	10.2 ± 0.1mm	10.2 ± 0.1mm
Jacket - material	PVC	PVC	PVC	UV resistance PE	UV resistance LSZH
SHIELDING					
Screening attenuation @ 30-1000 MHz	> 75dB	> 75dB	> 90dB	> 120dB	> 120dB
Screening attenuation @ 1000-2000 MHz	> 85dB	> 85dB	> 80dB	> 115dB	> 115dB
Screening attenuation @ 2000-3000 MHz	> 75dB	> 80dB	> 70dB	> 100dB	> 100dB
TRANSFER IMPEDANCE					
Transfer Impedance @ 5-30 MHz			< 0.35mΩ/m	< 2,5mΩ/m	< 2,5mΩ/m
LOSS					
Attenuation (at 20°C) @ 5 MHz	3.9dB	2.5dB	2.1dB	0.9dB	0.9dB
Attenuation (at 20°C) @ 50 MHz	11.4dB	6.1dB	5.7dB	2.7dB	2,7dB
Attenuation (at 20°C) @ 200 MHz	21.4dB	11.2dB	11.0dB	5.6dB	5,6dB
Attenuation (at 20°C) @ 470 MHz	33.5dB	17.5dB	17.2dB	8.8dB	8,8dB
Attenuation (at 20°C) @ 862 MHz	46.5dB	23.9dB	23.6dB	12.3dB	12,3dB
Attenuation (at 20°C) @ 1000 MHz	50.6dB	25.9dB	25.5dB	13.1dB	13,1dB
Attenuation (at 20°C) @ 1350 MHz	59.6dB	30.4dB			
Attenuation (at 20°C) @ 1600 MHz			34.3dB		
Attenuation (at 20°C) @ 1750 MHz	66.5dB	34.8dB		18.0dB	18,0dB
Attenuation (at 20°C) @ 2150 MHz	72.0dB	39.0dB	38.0dB	20.2dB	20,2dB
RETURN LOSS					
Structural return loss @ 5-470 MHz	> 21dB	> 26dB	dB	> 26dB	> 26dB
Structural return loss @ 470-1000 MHz	> 20dB	> 23dB	> 28dB	> 23dB	> 23dB
Structural return loss @ 1000-2000 MHz	> 18dB	> 18dB	> 26dB	> 20dB	> 20dB
Structural return loss @ 2000-3000 MHz	> 16dB	> 16dB	> 22dB	> 20dB	> 20dB
ELECTRICAL					
Impedance	75 ± 3Ω	75 ± 3Ω	75 ± 3Ω	75 ± 3Ω	75 ± 3Ω
Capacity	55 ± 1pF/m	52 ± 1pF/m	52 ± 2pF/m	52.0 ± 3pF/m	52.0 ± 3pF/m
Velocity ratio	82%	85%	85%	82%	82%
Inner DC resistance	130Ω/km	25Ω/km	35Ω/km	7,5Ω/km	7,5Ω/km
Outer DC resistance	40Ω/km	50Ω/km	18.6Ω/km	9Ω/km	9Ω/km
OPERATIONAL					
Application	Indoor	Indoor	Indoor	Outdoor	Indoor
Fire Class			E _{ca}	F _{ca}	D _{ca}
MECHANICAL					
Colour	White	White	White	Black	White
Length (m)	100m	100m	100m	500m	500m
Minimum bending radius - single/repeated	25/50mm	25/50mm	25/50mm	50/100mm	50/100mm

TRIAX® RG11 cables

durable quality cable offering high stability for many years



Triax RG11 cables

RG 11 types are ideal for entry point feed systems running to a building and applications to each floor of residential buildings. The RG 11s are durable quality cables with CU or CCS inner conductors, offering high stability for many years to come. To protect the signals from electromagnetic

interference, the cable is engineered with a high shielding efficiency – Class A according to EN 50117. Installing TRIAX RG 11 types, end-users benefit by receiving higher quality TV pictures.



KOKA 6
PE black
100m coil

Art. No. 150125



RG 11 - CCS
PE black
305m drum

Art. No. 150118



KOKA RG6
PE black
305m reel

Art. No. 150026



RG 11
PE black
305m drum

Art. No. 150117

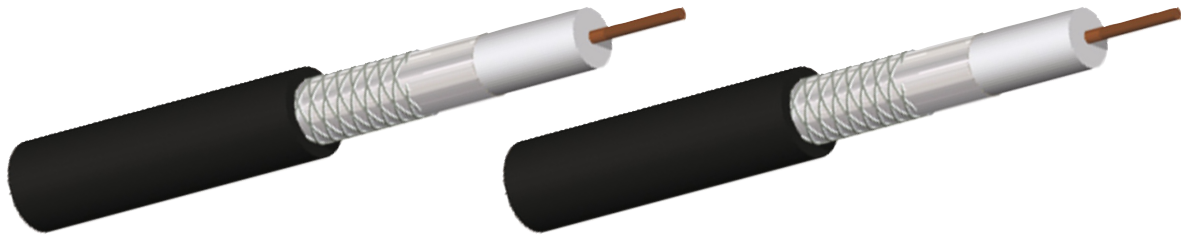


RG 11
PE black
500m drum

Art. No. 150115

TRIAX[®] RG11 cables

cable range optimised to meet your needs!



Type:	KOKA 6 PE black 100m coil	KOKA RG6 CCS PE black 305m reel	RG 11 - CCS PE black 305m drum	RG 11 PE black 305/500m drum
Art. no.	150125	150026	150118	150115 / 150117
CONSTRUCTION				
Inner conductor - material	Cu	CCS	CCS	Cu
Inner conductor - dimension	1.02 ± 0.03mm	1.02 ± 0.01mm	1.63 ± 0.01mm	1.63 ± 0.01mm
Dielectric - material	PE gas injected	PE gas injected	PEG	PEG
Dielectric - dimension	4.8 ± 0.1mm	4.57 ± 0.05mm	7.2 ± 0.15mm	7.2 ± 0.15mm
Shield (First) foil 1 – material	Al/Pet - unbonded	Al/Pet - bonded	Al/Pet tape - bonded	Al/Pet tape - bonded
Shield (First) foil 1 – overlap	20%	20%	20%	20%
Shield (Second) – braid material	Al wire	Al wire	CuSn	CuSn
Shield (Second) – braid dimension	mm	mm	mm	mm
Shield (Second) – braid coverage	45 ± 3%	60 ± 3%	75 ± 3%	75 ± 3%
Third shield – foil 2 – material			Al/Pet/Al tape	Al/Pet/Al tape
Jacket – dimension	6.8 ± 0.2mm	6.86 ± 0.15mm	10.16 ± 0.15mm	10.16 ± 0.15mm
Jacket - material	PE	PE	PE	PE
SHIELDING				
Screening attenuation @ 30-1000 MHz	> 75dB	> 75dB	> 90dB	> 90dB
Screening attenuation @ 1000-2000 MHz	> 65dB	> 65dB	> 75dB	> 75dB
Screening attenuation @ 2000-3000 MHz	> 55dB	> 55dB	> 65dB	> 65dB
TRANSFER IMPEDANCE				
Transfer Impedance @ 5-30 MHz	< 15mΩ/m	mΩ/m	mΩ/m	mΩ/m
LOSS				
Attenuation (at 20°C) @ 5 MHz	1.9dB	2.66dB	1.25dB	1.25dB
Attenuation (at 20°C) @ 50 MHz	5.0dB	5.0dB	2.85dB	2.85dB
Attenuation (at 20°C) @ 200 MHz	9.0dB	9.0dB	5.84dB	5.84dB
Attenuation (at 20°C) @ 470 MHz	15.2dB	15.2dB	9.31dB	9.31dB
Attenuation (at 20°C) @ 862 MHz	20.1dB	19.0dB	13.15dB	13.15dB
Attenuation (at 20°C) @ 1000 MHz	21.49dB	21.5dB	14.27dB	14.27dB
Attenuation (at 20°C) @ 1350 MHz	23.5dB	25.33dB	16.99dB	16.99dB
Attenuation (at 20°C) @ 1750 MHz	26.5dB	28.4dB	19.80dB	19.80dB
Attenuation (at 20°C) @ 2150 MHz	31.2dB	30.5dB	22.40dB	22.40dB
RETURN LOSS				
Structural return loss @ 5-470 MHz	> 21dB	> 23dB	> 20dB	> 20dB
Structural return loss @ 470-1000 MHz	> 21dB	> 21dB	> 18dB	> 18dB
Structural return loss @ 1000-2000 MHz	> 18dB	> 18dB	> 16dB	> 16dB
Structural return loss @ 2000-3000 MHz	> 16dB	> 16dB	> 15dB	> 15dB
ELECTRICAL				
Impedance	75 ± 3Ω	75 ± 3Ω	75 ± 3Ω	75 ± 3Ω
Capacity	53pF/m	52 ± 3pF/m	53pF/m	53pF/m
Velocity ratio	81%	81%	83%	83%
Inner DC resistance	< 23Ω/km	< 102Ω/km	< 40Ω/km	< 9Ω/km
Outer DC resistance	< 58Ω/km	< 60Ω/km	< 12Ω/km	< 12Ω/km
OPERATIONAL				
Application	Outdoor	Outdoor	Outdoor	Outdoor
Fire Class	F _{ca}	F _{ca}	F _{ca}	F _{ca}
MECHANICAL				
Colour	Black	Black	Black	Black
Length (m)	100m	305m	305m	305/500m
Minimum bending radius - single/repeated	23/70mm	23/70mm	38/100mm	38/100mm

TRIAX® RG6 multi colour cables

individually colour coded for easy mounting of multiswitches



Triax Triple shielded multi colour cables

Triax Triple shielded multi colour cables are high quality cables for multiswitch installations. The colour codes of the cables can be used through the system and are suitable for Triax multiswitch colour coded connectors. Full copper inner conductors ensure low loss in your installation.



**18 MULTI 4 color cable,
6.7mm, PVC black,
100m drum**

Art. No. 731073

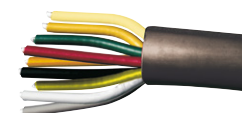
EAN Number
5702667310731



**18MULTI 5 color cable,
6.7mm, PVC white,
100m drum**

Art. No. 731074

EAN Number
5702667310748



**18MULTI 9 color cable,
6.7mm, PVC black,
50m drum**

Art. No. 731075

EAN Number
5702667310755



**18MULTI 9 color cable,
6.7mm, PVC black,
100m drum**

Art. No. 731076

EAN Number
5702667310762



**18MULTI 4 color cable,
6.7mm, PE color/PVC black,
100m drum**

Art. No. 731077

EAN Number
5702667310779

TRIAX® RG6 multi colour cables

cable range optimised to meet your needs!



Type:	MULTI 4 colour cable, PVC black, 100m drum	MULTI 5 colour cable, PVC white, 100m drum	MULTI 9 colour cable, PVC black, 50 / 100m drum	MULTI 4 colour cable, PE color/PVC black, 100m drum
Art. no.	731073	731074	731075 / 731076	731077
CONSTRUCTION				
Inner conductor - material	Cu	Cu	Cu	Cu
Inner conductor - dimension	1.00 ± 0.01mm	1.00 ± 0.01mm	1.00 ± 0.02mm	1.02 ± 0.02mm
Dielectric - material	PE gas injected	PE gas injected	PE gas injected	PE gas injected
Dielectric - dimension	4.8 ± 0.15mm	4.8 ± 0.15mm	4.8 ± 0.15mm	4.8 ± 0.15mm
Shield (First) foil 1 – material	Al/Pet/Al	Al/Pet/Al	Al/Pet/Al	Al/Pet/Al
Shield (Second) – braid material	Al	Al	Al	Al
Shield (Second) – braid coverage	43 ± 2%	43 ± 2%	43 ± 2%	43 ± 2%
Third shield – foil 2 – material	Al/Pet	Al/Pet	Al/Pet	Al/Pet
Jacket – dimension	6.7 ± 0.2mm	6.7 ± 0.2mm	6.7 ± 0.2mm	6.7 ± 0.2mm
Jacket - material	PVC	PVC	PVC	PE
SHIELDING				
Screening attenuation @ 30-1000 MHz	> 85dB	> 85dB	> 85dB	> 85dB
Screening attenuation @ 1000-2000 MHz	> 75dB	> 75dB	> 75dB	> 75dB
Screening attenuation @ 2000-3000 MHz	> 65dB	> 65dB	> 65dB	> 65dB
LOSS				
Attenuation (at 20°C) @ 5 MHz	2.1dB	2.1dB	2.1dB	2.1dB
Attenuation (at 20°C) @ 50 MHz	4,9dB	4,9dB	4,9dB	4,9dB
Attenuation (at 20°C) @ 200 MHz	10dB	10dB	10dB	10dB
Attenuation (at 20°C) @ 800 MHz	19dB	19dB	19dB	19dB
Attenuation (at 20°C) @ 1000 MHz	22,5dB	22,5dB	22,5dB	22,5dB
Attenuation (at 20°C) @ 1350 MHz	25dB	25dB	25dB	25dB
Attenuation (at 20°C) @ 1750 MHz	29dB	29dB	29dB	29dB
Attenuation (at 20°C) @ 2150 MHz	32dB	32dB	32dB	32dB
RETURN LOSS				
Structural return loss @ 5-470 MHz	> 18 (return loss)dB	> 18 (return loss)dB	> 18 (return loss)dB	> 18 (return loss)dB
Structural return loss @ 470-1000 MHz	> 16 (return loss)dB	> 16 (return loss)dB	> 16 (return loss)dB	> 16 (return loss)dB
Structural return loss @ 1000-2000 MHz	> 12 (return loss)dB	> 12 (return loss)dB	> 12 (return loss)dB	> 12 (return loss)dB
Structural return loss @ 2000-3000 MHz	> 12 (return loss)dB	> 12 (return loss)dB	> 12 (return loss)dB	> 12 (return loss)dB
ELECTRICAL				
Impedance	75 ± 5Ω	75 ± 5Ω	75 ± 5Ω	75 ± 5Ω
Capacity	52.0 ± 3pF/m	52.0 ± 3pF/m	52.0 ± 3pF/m	52.0 ± 3pF/m
Inner DC resistance	< 21,3Ω/km	< 21,3Ω/km	< 21,3Ω/km	< 21,3Ω/km
Outer DC resistance	< 40Ω/km	< 40Ω/km	< 40Ω/km	< 40Ω/km
OPERATIONAL				
Application	Indoor	Indoor	Indoor	Outdoor
Fire Class	Eca	Eca	Eca	Fca
MECHANICAL				
Colour	Black	White	Black	Black
Length (m)	100m	100m	50m	100m
Minimum bending radius	190mm	185mm	205mm	250mm

TRIAX® CAT6 cables

UTP connection cable



Triax CAT 6 twisted pair cables

These 4 twisted pair 23 AWG Cat 6 cables are used in data communication networks for transmission of telephone, internet and video/TV signals. In the creation of high quality networks the Cat 6 cables are ideal where your installation requires high bandwidth. The bandwidth limit is 250 MHz.

Allowing 10/100/1000 use with up to 100 meter cable length, supporting speeds up to 10 gigabits per second over shorter distances.

- 23 AWG Solid Bare Copper
- High speed gigabit Ethernet
- Superior performance and quality



**Cat 6 - LSZH white, 23AWG,
250MHz, U/UTP, 305 m**

Art. No. 155006

EAN Number
5702661550065



**Cat 6 - PE black, 23AWG,
250MHz, U/UTP, 100 m**

Art. No. 155003

EAN Number
5702661550034



**Cat 6 - PVC grey, 23AWG,
250MHz, U/UTP, 305 m**

Art. No. 155001

EAN Number
5702661550010



**Cat 6 - PE brown, 23AWG,
250MHz, U/UTP, 100 m**

Art. No. 155004

EAN Number
5702661550041

TRIAx[®] CAT6 cables

UTP connection cable

Type:	Cat 6 LSZH white 23AWG 250MHz U/UTP 305 m	Cat 6 PVC grey 23AWG 250MHz U/UTP 305 m	Cat 6 PE black 23AWG 250MHz U/UTP 100 m	Cat 6 PE brown 23AWG 250MHz U/UTP 100 m
Art. no.	155006	155001	155003	155004
CONSTRUCTION				
Inner conductor - material	Solid Bare Cu			
Inner conductor - dimension	0.53 ±0.005mm			
Flat filler - material	PE Spline			
Insulation material	Solid PE			
Jacket - dimension	6.0 ± 0.50mm			
Jacket - thickness	0.5mm			
Jacket - material	LSZH	PVC	PE	PE
Colour code - Pair 1	Blue / White-Blue			
Colour code - Pair 2	Orange / White-Orange			
Colour code - Pair 3	Green / White-Green			
NEXT				
Next @ 1 MHz	74.30dB	74.30dB	74.30dB	74.30dB
Next @ 4 MHz	65.30dB	65.30dB	65.30dB	65.30dB
Next @ 10 MHz	59.30dB	59.30dB	59.30dB	59.30dB
Next @ 16 MHz	56.20dB	56.20dB	56.20dB	56.20dB
Next @ 25 MHz	53.30dB	53.30dB	53.30dB	53.30dB
Next @ 31.25 MHz	51.90dB	51.90dB	51.90dB	51.90dB
Next @ 100 MHz	44.30dB	44.30dB	44.30dB	44.30dB
Next @ 200 MHz	39.80dB	39.80dB	39.80dB	39.80dB
Next @ 250 MHz	38.30dB	38.30dB	38.30dB	38.30dB
LOSS				
Attenuation (at 20°C) @ 1 MHz	2.00dB	2.00dB	2.00dB	2.00dB
Attenuation (at 20°C) @ 4 MHz	3.80dB	3.80dB	3.80dB	3.80dB
Attenuation (at 20°C) @ 10 MHz	6.00dB	6.00dB	6.00dB	6.00dB
Attenuation (at 20°C) @ 16 MHz	7.60dB	7.60dB	7.60dB	7.60dB
Attenuation (at 20°C) @ 25 MHz	9.50dB	9.50dB	9.50dB	9.50dB
Attenuation (at 20°C) @ 31.25 MHz	10.70dB	10.70dB	10.70dB	10.70dB
Attenuation (at 20°C) @ 100 MHz	19.80dB	19.80dB	19.80dB	19.80dB
Attenuation (at 20°C) @ 200 MHz	29.00dB	29.00dB	29.00dB	29.00dB
Attenuation (at 20°C) @ 250 MHz	32.80dB	32.80dB	32.80dB	32.80dB
RETURN LOSS				
Return loss @ 1 MHz	20.00dB	20.00dB	20.00dB	20.00dB
Return loss @ 4 MHz	23.00dB	23.00dB	23.00dB	23.00dB
Return loss @ 10 MHz	25.00dB	25.00dB	25.00dB	25.00dB
Return loss @ 16 MHz	25.00dB	25.00dB	25.00dB	25.00dB
Return loss @ 25 MHz	24.30dB	24.30dB	24.30dB	24.30dB
Return loss @ 31.25 MHz	23.60dB	23.60dB	23.60dB	23.60dB
Return loss @ 100 MHz	20.10dB	20.10dB	20.10dB	20.10dB
Return loss @ 200 MHz	18.00dB	18.00dB	18.00dB	18.00dB
Return loss @ 250 MHz	17.30dB	17.30dB	17.30dB	17.30dB
ELECTRICAL				
Characteristic imp. (1-100 MHz)	100 ±15Ω	100 ±15Ω	100 ±15Ω	100 ±15Ω
Characteristic imp. (100-250 MHz)	100 ±20Ω	100 ±20Ω	100 ±20Ω	100 ±20Ω
Conductor DC resistance @ 20°C	< 950hm/km	< 950hm/km	< 950hm/km	< 950hm/km
Mutual capacity @ 1kHz	< 1500pF/m	< 1500pF/m	< 1500pF/m	< 1500pF/m
OPERATIONAL				
Application	Indoor	Indoor	Outdoor	Outdoor
Fire Class	D _{ca}	E _{ca}	F _{ca}	F _{ca}
MECHANICAL				
Colour	White	Grey	Black	Brown
Length (m)	305m	305m	100m	100m
Min. bending radius - single/repeated	8xDmm	8xDmm	8xDmm	8xDmm

TRIAX® CAT6 cables

patch leads – 250 MHz stranded copper 23 AWG



Features and benefits

These 4 twisted pair 23 AWG Cat 6 cables are used in data communication networks for transmission of telephone, internet and video/TV signals.

In the creation of high quality networks the Cat 6 cables are ideal where your installation require high bandwidth. The bandwidth limit is 250 MHz.

Allowing 10/100/1000 use with up to 100 meter cable length, supporting speeds up to 10 gigabits per second over shorter distances.

- 23 AWG Solid Bare Copper
- High speed gigabit Ethernet
- Superior performance and quality



Cat 6-Grey, 0.5m patch leads - Premium Grade

Art. No. 157001

EAN Number
5702661570018



Cat 6-White, 15.0m patch leads - Premium Grade

Art. No. 157068

EAN Number
5702661570681



Cat 6-White, 3.0m patch leads - Premium Grade

Art. No. 157065

EAN Number
5702661570650



Cat 6-Red, 0.5m patch leads - Premium Grade

Art. No. 157021

EAN Number
5702661570216



Cat 6-White, 10.0m patch leads - Premium Grade

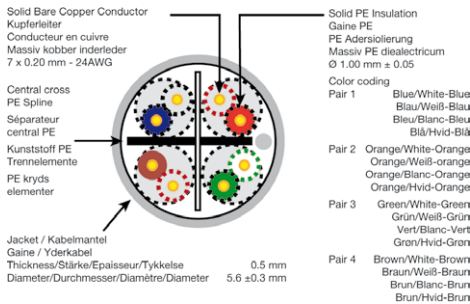
Art. No. 157067

EAN Number
5702661570674

TRIAX® CAT6 cables

patch leads – 250 MHz stranded copper 23 AWG

Dimensions / Abmessungen Dimensions / Dimension



Type:	Cat 6, 0.5m patch leads Premium Grade	Cat 6, 3.0m patch leads Premium Grade	Cat 6, 10.0m patch leads Premium Grade	Cat 6, 15.0m patch leads Premium Grade
CONSTRUCTION				
Inner conductor - material	Stranded Bare Cu			
Inner conductor - dimension	7x 0.2mm			
Jacket - dimension	5.6 ± 0.30mm			
Jacket - material	PVC (UL approved)			
Jacket - thickness	0.5mm			
Colour code - Pair 1	Blue / White-Blue			
Colour code - Pair 2	Orange / White-Orange			
Colour code - Pair 3	Green / White-Green			
Colour code - Pair 4	Brown / White-Brown			
Flat filler - material	Flexible PE			
Insulation dimension	1.02 ±0.05mm			
Insulation material	Solid PE			
NEXT				
Next @ 4 MHz	65.0dB			
Next @ 8 MHz	65.0dB			
Next @ 10 MHz	65.0dB			
Next @ 20 MHz	59.1dB			
Next @ 31.25 MHz	55.4dB			
Next @ 62.5 MHz	49.6dB			
Next @ 100 MHz	45.7dB			
Next @ 200 MHz	40.1dB			
Next @ 250 MHz	38.3dB			
RETURN LOSS				
Return loss @ 4 MHz	21.6dB			
Return loss @ 8 MHz	22.5dB			
Return loss @ 10 MHz	22.8dB			
Return loss @ 20 MHz	23.7dB			
Return loss @ 31.25 MHz	23.1dB			
Return loss @ 62.5 MHz	20.0dB			
Return loss @ 100 MHz	18.0dB			
Return loss @ 200 MHz	15.0dB			
Return loss @ 250 MHz	14.0dB			
ELECTRICAL				
Characteristic imp. (1-100 MHz)	100 ±15Ω			
Characteristic imp. (100-250 MHz)	100 ±20Ω			
CONNECTORS				
Connector Type	RJ45			

TRIAX® High and Standard Speed HDMI™

professional grade, high quality HDMI cable



Features and benefits

- High Speed HDMI with Ethernet (1.5, 2, 3, 5m)
- Standard Speed HDMI with Ethernet (10,15, 20m)
- HDMI Ethernet Channel
- Audio Return Channel
- 24K Gold Plated Connectors
- 3D and 4K Resolution Support
- Compact EMI Interface suppressed
- High quality AWG cables to reduce attenuation
- Compatible with all HD resolutions including 720p, 1080i and 1080p video formats
- Expanded Support for Colour Spaces
- Fully Shielded
- For connecting HD set top boxes, DVD players, games consoles and all other HDMI AV equipment



High Speed HDMI cable with Ethernet - 1.5m Blisterpack

Art. No. 370715

EAN Number
5702663707153



High Speed HDMI cable with Ethernet - 5.0m Blisterpack

Art. No. 370718

EAN Number
5702663707184



High Speed HDMI cable with Ethernet - 2.0 m Blisterpack

Art. No. 370716

EAN Number
5702663707160



High Speed HDMI cable with Ethernet - 3.0m Blisterpack

Art. No. 370717

EAN Number
5702663707177



 **x.v.Colour**

TRIAX[®] High and Standard Speed HDMI[™]

professional grade, high quality HDMI cables with ethernet



Standard Speed HDMI cable with Ethernet - 10.0m Blisterpack

Art. No. 370719

EAN Number
5702663707191



Standard Speed HDMI cable with Ethernet - 20.0m Blisterpack

Art. No. 370721

EAN Number
5702663707214



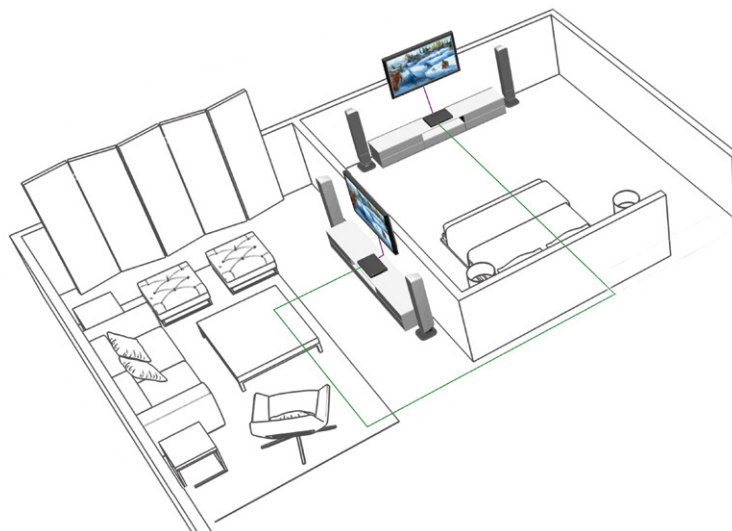
Standard Speed HDMI cable with Ethernet - 15.0m Blisterpack

Art. No. 370720

EAN Number
5702663707207



Type:	High Speed HDMI cable with Ethernet 1.5m / 2.0m / 3.0m / 5.0m Blisterpack	Standard Speed HDMI cable with Ethernet 10.0m / 15.0m / 20.0m Blisterpack
Art. no.	370715 / 370716 / 370717 / 370718	370719 / 370720 / 370721
CHARACTERISTICS		
Ferrite	2pcs.	2pcs.
CONSTRUCTION		
Inner conductor - dimension	28 AWGmm	26 AWGmm
Shield (Second) – braid material	Al. Alloy	Al. Alloy
Jacket – dimension	7.3mm	9.5mm
Jacket - material	PVC	PVC
Plug - material	Gold plated	Gold plated
CONNECTORS		
Connector - left	1 x 19-pin HDMI male	1 x 19-pin HDMI male
Connector - right	1 x 19-pin HDMI male	1 x 19-pin HDMI male



TRIAX® RF-Cable cables

IEC-male / IEC-female – Standard, Blister pack and High Grade



RF-cable – features and benefits

TRIAX's assortment of high grade RF-coax cables. To connect a TV or radio to an aerial socket with an straight IEC-male/IEC-female

- White, 75 ohms double shielded cable
- With IEC coax connectors and jacks
- Fully assembled
- High shielding (> 90 dB)

Standard RF-cable in blister pack



RF-Cable 1.5 m
IEC-male/IEC-female straight
- blister

Art. No. 153500

EAN Number
5702661535000



RF-Cable 10.0 m
IEC-male/IEC-female straight
- blister

Art. No. 153504

EAN Number
5702661535048



RF-Cable 2.5 m
IEC-male/IEC-female straight
- blister

Art. No. 153501

EAN Number
5702661535017



RF-Cable 15.0 m
IEC-male/IEC-female straight
- blister

Art. No. 153505

EAN Number
5702661535055



RF-Cable 5.0 m
IEC-male/IEC-female straight
- blister

Art. No. 153502

EAN Number
5702661535024

TRIAX[®] RF-Cable cables

IEC-male / IEC-female – Standard, Blister pack and High Grade

High grade - RF-cables

Stofa:
approved



youSee
ready
15.06.2017

High Grade Antenna Cable
CTV A 1.5 m - IEC-male/
IEC-female straight - blister

Art. No. 153530
EAN Number
5702661535307

Stofa:
approved



youSee
ready
15.06.2017

High Grade Antenna Cable
CTV A 5.0 m - IEC-male/
IEC-female straight - blister

Art. No. 153532
EAN Number
5702661535321

youSee
ready
15.06.2017



Stofa:
approved

High Grade Antenna Cable
CTV A 3.0 m - IEC-male/
IEC-female straight - blister

Art. No. 153531
EAN Number
5702661535314

Stofa:
approved



youSee
ready
15.06.2017

High Grade Antenna Cable
CTV A 10.0 m - IEC-male/
IEC-female straight - blister

Art. No. 153534
EAN Number
5702661535345

Standard RF-cable



RF-Cable 1.5 m
IEC-male/IEC-female straight
- polybag

Art. No. 153400
EAN Number
5702661534003



RF-Cable 7.5 m
IEC-male/IEC-female straight
- polybag

Art. No. 153403
EAN Number
5702661534034



RF-Cable 2.5 m
IEC-male/IEC-female straight
- polybag

Art. No. 153401
EAN Number
5702661534010



RF-Cable 10.0 m
IEC-male/IEC-female straight
- polybag

Art. No. 153404
EAN Number
5702661534041



RF-Cable 5.0 m
IEC-male/IEC-female straight
- polybag

Art. No. 153402
EAN Number
5702661534027

TRIAX® Connection cables

AV, HF and assembly kit



Connection cables for AV- and decoder connection

TRIAX's selection of connection cables for use with decoders and other electronic accessories.

Available in different combinations and length:

- 15 pol D-sub connector
- RCA phone male connector
- Scart male connector



AV cable 1.50 m
15 pol D-Sub/3xRCA

Art. No. 300745

EAN Number
5702663007451



AV cable 1.50 m
15 pol D-sub/Scart

Art. No. 300742

EAN Number
5702663007420

TRIAX® Connection cables

AV, HF and assembly kit

Connection cables for HF connection



CHF 015
Connecting lead black
2 x F-male Quick angled
15 cm

Art. No. 360408

EAN Number
5702663604087



CHF 126
Connecting lead black
2 x F-male Quick angled
50 cm

Art. No. 724012

EAN Number
5702667240120



CHF 125
Connecting lead black
2 x F-male Quick angled
25 cm

Art. No. 724006

EAN Number
5702667240069



CHF 200
Connecting lead black
2 x F-male Quick angled
2.0 m

Art. No. 724010

EAN Number
5702667240106

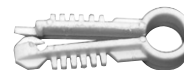
Cables assembly kit



CC-SP 01
cable assembly kit

Art. No. 153540

EAN Number
5702661535406



CFC 680
Plastic Dowels White

Art. No. 90680

EAN Number
5702660906801



CC-SP 02
cable assembly kit

Art. No. 153542

EAN Number
5702661535420



CFC 681
Plastic Dowels Black

Art. No. 90679

EAN Number
5702660906795

TRIAX[®] Connectors

F-compression types



F-compression connectors

Below you will find a selection of F-compression connectors suitable for TRIAX's cable portfolio.

We offer only the best for the installation of your high-quality distribution systems

- For indoor and outdoor installations
- Used by leading network operators
- High shielding
- Large range for all applications



**F-compression connector
F56-CX3-4.9
100 pcs. box**

Art. No. 153220

EAN Number
5702661532207



**F-compression connector
CX3 7.0 QM (Quick-mount)
with o-ring
50 pcs. box**

Art. No. 360943

EAN Number
5702663609433



**F-compression connector
F56-CX3-5.1 short
100 pcs. box**

Art. No. 153221

EAN Number
5702661532214



**F-compression connector
CX3 5.0 QM short
50 pcs. box**

Art. No. 360949

EAN Number
5702663609495



**F-compression connector
5.1/6.8
100 pcs. bag**

Art. No. 360913

EAN Number
5702663609136

TRIAX® Connectors

F-compression types



**F-compression
IEC-male 4.9/6.8
100 pcs. box**

Art. No. 153226

EAN Number
5702661532269



**F-compression
CX3 4.9 SC short
100 pcs. box**

Art. No. 360948

EAN Number
5702663609488



**F-compression connector
5.1/6.8 short
100 pcs. bag**

Art. No. 153224

EAN Number
5702661532245



**F-compression RG11
CX3-10.5 QM
25 pcs. box**

Art. No. 711571

EAN Number
5702667115718



**F-compression connectors
3.8/5.2
1 pcs.**

Art. No. 153225

EAN Number
5702661532252



**F-compression connector
RG11-CX3-11.3 QM
25 pcs. box**

Art. No. 711572

EAN Number
5702667115725



**F-compression connector
7.5/11.5
50 pcs. bag**

Art. No. 153227

EAN Number
5702661532276



Compression Set 6- 49

Art. No. 350265

EAN Number
5702663502659



**F-compression
CX3 5.1 SC short
100 pcs. box**

Art. No. 360947

EAN Number
5702663609471

TRIAX[®] Connectors

F-push on and self-install types



F-push on and Self install connectors

Below you will find F-push on connectors suitable for the TRIAX cable portfolio.

- Ideal for hard and cold cables
- Easy to mount
- Water protected by O-ring
- Class A +

You will also find F-Self install connectors suitable for the TRIAX cable portfolio.

- The ideal solution for home applications
- No assembly tool needed
- No wear on the bushes
- Class A +



F-Push-On connector
5.1/6.8
100 pcs. box

Art. No. 153250

EAN Number
5702661532504



F-Self Install connector
F-56 5.1/Tool Kit
Blister

Art. No. 153266

EAN Number
5702661532665



F-Self-install connector
F56-5.1 blue
100 pcs. box

Art. No. 153264

EAN Number
5702661532641



F-Self-install connector
F56-4.9 yellow
100 pcs. box

Art. No. 153265

EAN Number
5702661532658

TRIAX[®] Connectors

F-crimp types

F-crimp connectors

On this page you will find a selection of F-crimp connectors suitable for Triax cable portfolio.

We offer only the best for the installation of your high-quality distribution systems

- For indoor and outdoor installations
- CRP assembly tool needed
- Class A +



**F-crimp connector
F56-ALM 5.1/8.4
100 pcs. box**

Art. No. 153203

EAN Number
5702661532030



**F-crimp connector
ALM 7.6/11.7
50 pcs. box**

Art. No. 153231

EAN Number
5702661532313



**F-crimp connector
ALM 3.7/6.4
100 pcs. box**

Art. No. 153204

EAN Number
5702661532047



**F-crimp connector
RG11
50 pcs. box**

Art. No. 153232

EAN Number
5702661532320



**F-crimp connector
4.9/8.4 Triax
100 pcs. bag**

Art. No. 153212

EAN Number
5702661532122

**F-crimp connector
SFC 250 Set
100 pcs. box**

Art. No. 350294

EAN Number
5702663502949

**F-crimp connector
4.9/8.4
100 pcs. bag**

Art. No. 153215

EAN Number
5702661532320

TRIAX[®] Connectors

F-twist on types



F-twist on connectors



F-twist on connector
1.9/3.5
5 pcs. bag

Art. No. 153049
EAN Number
5702661530494



F-twist on connector
4.9/6.8
100 pcs. bag

Art. No. 153073
EAN Number
5702661530739



F-twist on connector
4.9/7.3
5 pcs. bag

Art. No. 153052
EAN Number
5702661530524



F-twist on connector
4.9/7.3
100 pcs. bag

Art. No. 153074
EAN Number
5702661530746



F-twist on connector
4.9/6.8
5 pcs. bag

Art. No. 153053
EAN Number
5702661530531



F-twist on connector
4.9/6.8 without logo
100 pcs. bag

Art. No. 153078
EAN Number
5702661530784



F-twist on connector
3.5/5.0
100 pcs. bag

Art. No. 153072
EAN Number
5702661530722

TRIAX® Connectors

IEC types

IEC connectors

The popular and easy-to-install KOSWI/KOSWI designed for easy installation are available in a 90 degree angled version, with both male and female connectors ideal in tight spaces, such as a behind a flat-screen, where extra thin wall mounts make it impossible to use a straight version.

The angled IEC Self-Install™ connectors with the unique Self-Install™ system the connector is easily installed with a minimum of effort.

Common features:

- Reusable
- Class A screening
- No need for compression tools
- Two piece connector – no loose parts
- Professional quality and excellent performance
- Fits standard RG6 cables (connector size 4.9 and 5.1)



**KOSWI 4 IEC coax plug,
angled, male
in bag**

Art. No. 154110
EAN Number
5702661541100



**KOK 3 IEC coax plug,
female**

Art. No. 153121
EAN Number
5702661531217



**KOSWI 4 IEC coax plug,
angled, female
in bag**

Art. No. 154111
EAN Number
5702661541117



**IEC - Self Install plug 56/5.1,
straight, male**

Art. No. 153130
EAN Number
5702661531309



**KOSWI 3 IEC coax plug,
angled, male**

Art. No. 153110
EAN Number
5702661531101



**IEC - Self Install plug 56/5.1,
straight, female**

Art. No. 153131
EAN Number
5702661531316



**KOKWI 3 IEC coax plug,
angled, female**

Art. No. 153111
EAN Number
5702661531118



**IEC - Self Install plug 56/5.1,
angle, male**

Art. No. 153132
EAN Number
5702661531323



**KOS 3 IEC coax plug,
male**

Art. No. 153120
EAN Number
5702661531200



**IEC - Self Install plug 56/5.1,
angle, female**

Art. No. 153133
EAN Number
5702661531330

TRIAX® Adapters

F-types



F-adaptors



**F-female/F-female
adaptor**
100 pcs. bag

Art. No. 153076
EAN Number
5702661530760



**F-female/F-female
adaptor with nuts**
5 pcs. bag

Art. No. 153593
EAN Number
5702661535932



youSee
ready
15.06.2017

**F-female/F-female
adaptor - A+**
100 pcs. bag

Art. No. 153095
EAN Number
5702661530951



**F-male/F-male
adaptor**
5 pcs. bag

Art. No. 153596
EAN Number
5702661535963



**F-female/F-female
adaptor**
2 pcs. in blister

Art. No. 153292
EAN Number
5702661532924



**F-female/F-male
Quick adaptor**
10 pcs. bag

Art. No. 153612
EAN Number
5702661536120



**F-female/F-male
adaptor angled**
100 pcs.

Art. No. 153592
EAN Number
5702661535925



**F-male Quick/F-male
Quick adaptor, KVFC 03**
10 pcs. bag

Art. No. 350269
EAN Number
5702663502697

TRIAX® Adapters

IEC-types

IEC-adapters

TRIAX have a wide range of adapters available for CATV applications. The price/performance ratio is superior even on our standard products – the finest available on the market.

The range of adapters are designed with many interface combinations and many special versions with or without extensions.

Common features:

- Reusable
- Class A screening
- One piece connector - no loose parts
- Professional quality and excellent performance
- Fits the highest standard on the market



IEC-male/F-female adaptor angled, 100 pcs. bag

Art. No. 153550

EAN Number
5702661535505

IEC-female/F-male adaptor, 100 pcs. bag

Art. No. 153611

EAN Number
5702661536113



IEC-female/F-female adaptor angled, 100 pcs. bag

Art. No. 153551

EAN Number
5702661535512



IEC-male/F-female adaptor, 100 pcs. bag

Art. No. 153613

EAN Number
5702661536137



IEC-male/F-male adaptor, 2 pcs. blister

Art. No. 153554

EAN Number
5702661535543



IEC-female/F-female adaptor, 100 pcs. bag

Art. No. 153614

EAN Number
5702661536144



IEC-female/F-male adaptor, 2 pcs. blister

Art. No. 153555

EAN Number
5702661535550

IEC-male/F-male adaptor, 100 pcs. bag

Art. No. 153610

EAN Number
5702661536106



TRIAX® Tools

cable stripper, crimp tools, cable cutter



Cable stripper, crimp tools, cable cutter

Cable Strippers make it very simple and easy to prepare your cables for connection. Preparation is simply done in "one shot" only.

Standard crimp tools are available in different crimp size combinations

Compression crimp tools. TRIAX have different types of tools, easy to use with changeable plunger tips.

Pocket Compression Tool is inexpensive, easy to use and fits well in any pocket.

All tools supplied from TRIAX come with full instructions for correct use. You can also see how-to videos in the support section of our website – www.triax.com.



Cable stripper RG11 cable types

Art. No. 153601

EAN Number
5702661536014



Cable Support Tool F-key

Art. No. 153608

EAN Number
5702661536083



Compression Tool CX3

Art. No. 153603

EAN Number
5702661536038



Pocket Compression Tool - for long & short connectors

Art. No. 153631

EAN Number
5702661536311



CRP 106H Crimp Tool (.324" & .360")

Art. No. 153607

EAN Number
5702661536076



Insertion Tool for F-connectors

Art. No. 153633

EAN Number
5702661536335



Universal Cable Cutter

Art. No. 153636

EAN Number
5702661536366



Cable stripper - DEN 6768 (RG 6, 17 VAatC ..)

Art. No. 360918

EAN Number
3700113426342



Cabel stripper with HEX wrench

Art. No. 153637

EAN Number
5702661536373



Pocket Compression Tool Triax - for long connectors

Art. No. 360919

EAN Number
3700113426359



KABI Multi Tool for stripping and cutting cables blisterpack

Art. No. 153638

EAN Number
5702661536380



Compression Tool Universal

Art. No. 360920

EAN Number
3700113426366



Pocket Compression Tool VT 150 for short and long connectors

Art. No. 350262

EAN Number
5702663502628



MS 13 Mounting T-tool

Art. No. 360921

EAN Number
3700113426724

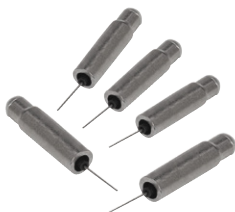
TRIAX[®] Accessories

power cable, F-terminators, attenuator



RFC 75
F-male Terminator
5 pcs. bag

Art. No. 153054
EAN Number
5702661530548



R 77 (75 Ohm)
F-male Termination resistor,
no DC blocker

Art. No. 302065
EAN Number
5702663020658



VA20F
0...20 dB / 47...862 MHz

Art. No. 153600
EAN Number
5702661536007



F-twist on connector
SFC 052

Art. No. 350257
EAN Number
5702663502574



True Lock Connector
FM-TL444

Art. No. 153583
EAN Number
5702661535833



TRIAX

connecting the future

Contact

triax.com / [contact](#)

TRIAX is a global supplier of reliable, innovative products and solutions for the reception and distribution of video, audio and data signals.

Our Products are used in homes, businesses and operator networks by broadcasters, satellite, cable and telecom operators.

Our Solutions combine our hardware and software expertise to deliver value to hospitality and related markets, through a partner network of system integrators, large installers and operators.

TRIAX's headquarters, production and R&D base is in Denmark. With 9 international sales subsidiaries we operate in more than 60 distributor countries.

The TRIAX team consists of 300 employees and is owned by Polaris Private Equity.

See www.triax.com for further info.

Copyright © 2016 TRIAX. All rights reserved. The TRIAX Logo and TRIAX, TRIAX Multimedia are registered trademarks or trademarks of the TRIAX Company or its affiliates.

The Triax portfolio is constantly changing and growing so this catalogue cannot be complete at all times. Please refer to our website and your sales representative for an update. All specification in this catalogue subject to change without further notice.

05-2018A

Art. No. 891407



triax.com