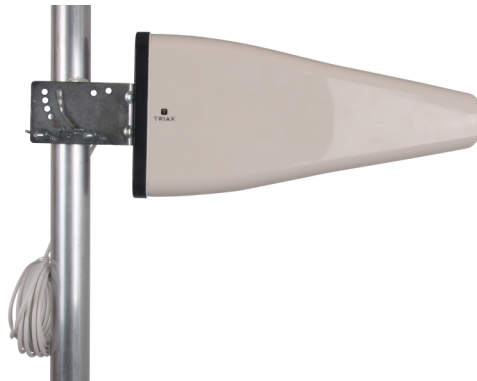


D5A 11W - Directional 5G Antenna

Art. Number 109601



Directional antenna for 4G/5G signal reception.

Future-proof connectivity, wherever you are

Work, rest or play online reliably and quickly, wherever you're staying - TRIAX 5G antennas boost mobile broadband reception in places fibre doesn't reach.

Simply connect to your choice of mobile broadband router to receive the maximum attainable mobile network speed at each location. The 11 dB gain ensures outstanding signal quality.

The antennas are ready for the advancing 5G roll-out across Scandinavia, bringing speeds up to 100x faster than 4G. They are fully compatible with all mobile signals: use the best possible 4G LTE speeds now, with no need for future upgrades when 5G arrives.

For the ultimate in speed and reliability, our antennas are MIMO compatible. We recommend installing a pair of directional antennas 70 cm apart and at 45° opposing angles.

The antenna is delivered with 7m white cable with connector, which is ready for mounting directly on the router.

Technical Specifications

ORDER INFORMATION

EAN Number 5702661096013

CHARACTERISTICS

Antenna type	directional
Antenna use	outdoor
MIMO	Yes by the use of 2 antennas
Polarization	vertical or horizontal
Polarization	vertical or horizontal

FREQUENCY RANGE

Frequency range | MHz 698 - 5000 (698-960/1710-2700/3300-3600/4800-5000) MHz



Technical Specifications

Services GMS/Wi-Fi/3G/4G/LTE/5G - (5G low band)

GAIN

Gain | dBi 10...11 dBi
VSWR < 2.5

ELECTRICAL

Front to back ratio - horizontal | dB > 21 dB
Impedance | Ω 50 Ω

OPERATIONAL

IP rating 65
Lightning protection DC ground on the antenna
Temperature - operating | $^{\circ}\text{C}$ -40... +60 $^{\circ}\text{C}$

CONNECTORS

Connector Type SMA-male
Output cable length | m 7 m
Output cable type PVC white UV protected low loss coaxial cable

MECHANICAL

Beamwidth horizontal | $^{\circ}$ 60 $^{\circ}$
Beamwidth vertical | $^{\circ}$ 55 $^{\circ}$
Bracketry with wingnuts
Colour RAL 1013 - White
Product Depth | mm 70 mm
Diameter of installation pole | mm 30-53 mm
Packaging Depth | m 0.087 m
Packaging Height | m 0.568 m
Total Weight | kg 1.415 kg
Packaging Width | m 0.217 m
Product Height | mm 210 mm
Product Length | mm 445 mm
Main material Plastic housing ABS
Net Weight | kg 1.180 kg
Packing QTY 1
Tara Weight | kg 0.235 kg
Packaging Volume | m³ 0.011 m³