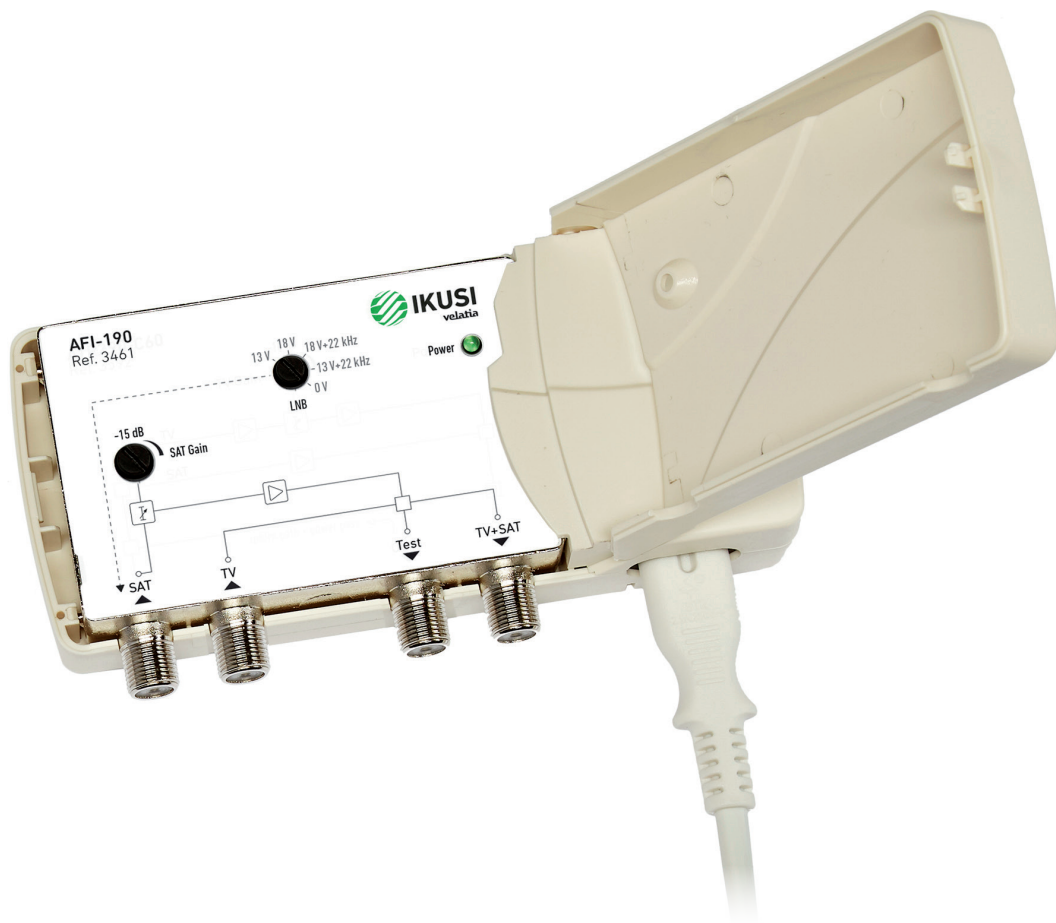




# TV-SAT Combiner

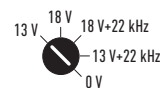
Unit to amplify a satellite polarity



Satellite 950-2450 MHz input port,  
with adjustable gain



Terrestrial coupling  
5-790 MHz input port



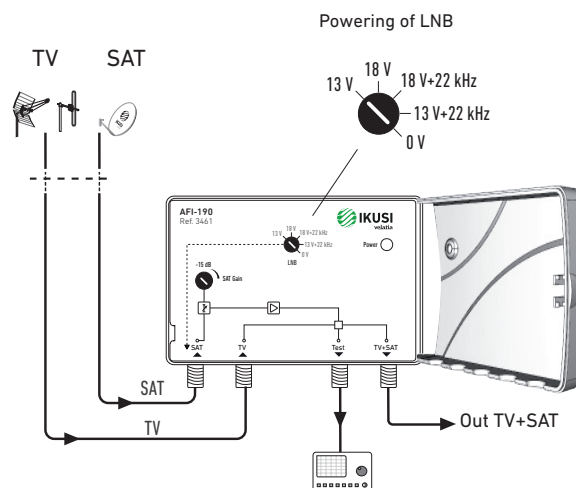
Adjustment of voltage/tone by  
means of rotary commutator

### Mains features

- 1 satellite 950-2450 MHz input port, with gain adjustment potentiometer;  
1 terrestrial coupling 5-790 MHz input port;  
1 satellite+Terrestrial output port;  
1 output test port.
- Line powering of LNB. Voltage/tone injection for selection of polarity and band by rotary commutator.
- Universal alternating power supply. Electrical safety protection level Class II. Insertable power cord with bipolar plug.
- Plastic box with protective cover. F type connectors.
- Indoor mounting through an fixing hanger.

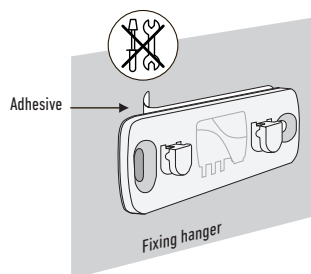
| MODEL                                     | AFI-190 |  |
|---|---------|--|
| REF.                                      | 3461    |  |
| TV frequency band                         | MHz     | 5 - 790                                |
| SAT frequency Band                        | MHz     | 950 - 2450                             |
| Inputs (TV and SAT)                       |         | 2                                      |
| Salida (TV+SAT)                           |         | 1                                      |
| TV+SAT output test                        | dB      | -30                                    |
| TV Gain (passive)                         | dB      | -1                                     |
| SAT Gain                                  | dB      | > 34                                   |
| SAT gain adjustment                       | dB      | 0 - 15                                 |
| Output level (IMD3 -35 dB, EN 50083-3)    | dBµV    | 120                                    |
| Input/output return loss                  | dB      | ≥ 6                                    |
| Noise figure                              | dB      | < 8                                    |
| Mains supply voltage                      | VAC     | 100 - 240                              |
| Regulation type                           |         | Switched mode                          |
| Insertable Voltage/Tone to SAT input port |         | 0V ; 13V+22kHz ; 18V+22kHz ; 18V ; 13V |
| Max LNB power current                     | mA      | 200 (+13 VDC / +18 VDC)                |
| Consumption                               | W       | < 6                                    |
| Dimensions                                | mm      | 120 x 85 x 50                          |

### Installation example

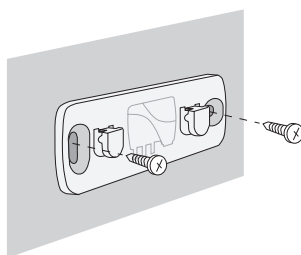


### Easy to fix/release the amplifier to the wall

Ⓐ fix hanger on the wall



Ⓑ drill and screw (optional)



Ⓒ place amplifier

