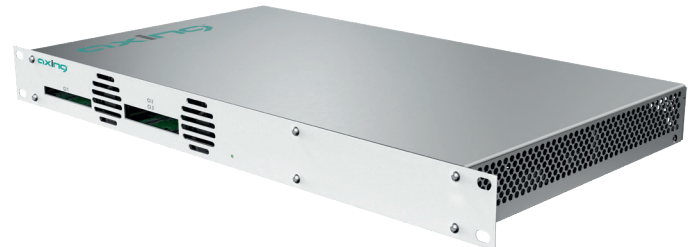


CHP - Compact High Performance Headends DVB Headend

- ✓ Independent tuner inputs
- ✓ Transmodulates DVB-S/S2/S2X¹ into DVB-C or DVB-T
- ✓ Decryption of encrypted program packages possible via CA modules (also high-speed modules)
- ✓ Flexible and efficient mapping of programs to CA modules
- ✓ Output modulation configurable
- ✓ Remux | Crossmultiplex
- ✓ LCN sorting, PID filtering² and NIT function²
- ✓ Web-based configuration
- ✓ Suitable for AXING SMARTPortal
- ✓ Supports SNMP
- ✓ Interface for CASimulcrypt Server²
- ✓ Can be used for wall mounting or as a 19" unit



Available devices:

- MK 8-00N | 8 × DVB-S/S2/S2X into 8 × DVB-C/T
- MK 8-03N | 8 × DVB-S/S2/S2X into 8 × DVB-C/T | 3 × CI
- MK 12-00N | 12 × DVB-S/S2/S2X into 12 × DVB-C/T
- MK 12-03N | 12 × DVB-S/S2/S2X into 12 × DVB-C/T | 3 × CI
- MK 16-00 | 16 × DVB-S/S2/S2X/T/T2/C into 16 × DVB-C/T
- MK 16-06 | 16 × DVB-S/S2/S2X/T/T2/C into 16 × DVB-C/T | 6 × CI

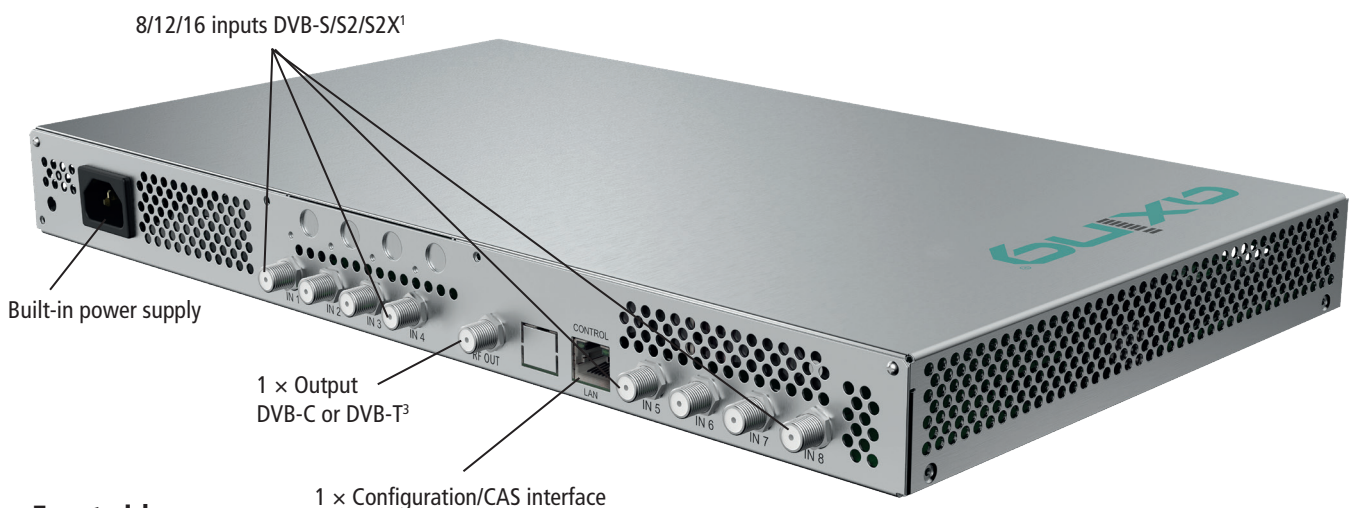
Software extensions:

- MKS 1-00 | NIT functionality
- MKS 1-01 | PID filtering
- MKS 1-02 | CASimulcrypt
- MKS 8-16 | For MK 8-0xN | Extension from 8 to 16 modulators
- MKS 12-16 | For MK 12-0xN | Extension from 12 to 16 modulators

Front panels:

- MKZ 1-00 | Front panel for 19" usage of MK 16-00
- MKZ 1-01 | Front panel for 19" usage of MK 16-06 | CI
- MKZ 1-02 | Front panel for 19" usage of MK 8-00N or MK 12-00N
- MKZ 1-03 | Front panel for 19" usage of MK 8-03N or MK 12-03N | CI

Rear side



Front side



MK 16-06, MK 8-03N and MK 12-03N with 6 or 3 CI slots on the front for CA modules for central decryption of encrypted programme packages (high-speed CAM are supported).

¹ DVB-S/S2/S2X/T/T2/C

² Software extension required

³ MK 16-0x additionally with test port



AXING AG

Gewerbehaus Moskau

Phone +41 52 - 742 83 00

Fax +41 52 - 742 83 19

8262 Ramsen

info@axing.com

www.axing.com

Type	MK 8-00N	MK 8-03N	MK 12-00N	MK 12-03N	MK 16-00	MK 16-06
Inputs						
Number of tuners	8 × DVB-S/S2/S2X		12 × DVB-S/S2/S2X		16 × DVB-S/S2/S2X/T/T2/C	
Connector	8 × F-female		12 × F-female		16 × F-female	
Frequency range	900 ... 2150 MHz @ DVB-S/S2/S2X				900...2150 MHz @ DVB-S/S2/S2X 50...898 MHz @ DVB-C 50...898 MHz @ DVB-T/T2	
Channel bandwidth	-	-	-	-	5/6/7/8 MHz @ DVB-T/T2	
Input level	43 ... 84 dBμV @ DVB-S/S2/S2X				43...84 dBμV @ DVB-S/S2/S2X 49...84 dBμV @ DVB-C 39...84 dBμV @ DVB-T/T2	
LNB voltage	13/17 V; 22 kHz on/off; DiSEqC 1.0					
Max. LNB current	250 mA per input 1000 mA per device					
CI slots	-	3	-	3	-	6
Input modulation						
Type	QPSK/8PSK/8APSK/16APSK/32APSK @ DVB-S/S2/S2X				QPSK/8PSK/8APSK/16APSK/32APSK @ DVB-S/S2/S2X QAM16, QAM32, QAM64, QAM128, QAM256 @ DVB-C QPSK, QAM16, QAM64 @ DVB-T QPSK, QAM16, QAM64, QAM256 @ DVB-T2	
Compliance	DVB-S = EN 300 421 DVB-S2 = EN 302 307-1 v1.4.1 DVB-S2X = EN 302 307-2 v1.1.1				DVB-S = EN 300 421 DVB-S2 = EN 302 307-1V1.4.1 DVB-S2X = EN 302 307-2V1.1.1 DVB-C = EN 300 429/ITU-TJ.83 Annex A/C DVB-T = EN 300 744 DVB-T2 = ETSI EN 302 755	
Supported input transport streams	MPEG-2 ISO/IEC 13818 MPEG-4 ISO/IEC 14496					
Error correction	auto					
Symbol rate	1.5 ... 45 MS/s (< 40 MS/s in 32APSK)				1.5...45 MS/s (< 40 MS/s in 32APSK) @ DVB-S/S2/S2X 1...7.2 Mbaud @ DVB-C	
Transportstreams						
Modifiable program information	Program name, SID remapping, PID remapping, PID filtering* TSID, ONID					
LCN	Yes					
NIT handling @ DVB-C	auto off manual*					
Encryption	DVB-CSA*, DVB-CISSA*, ATIS-IDSA*, AES-ECB*, AES-CBC*					
Output						
Number of channels	8 × DVB-C/DVB-T		12 × DVB-C/DVB-T		16 × DVB-C/DVB-T	
Frequency range	109 ... 1006 MHz @ DVB-C 109 ... 862 MHz @ DVB-T					
Channels selectable	S2...K87 @ DVB-C S2...K69 @ DVB-T					
Channel bandwidth	7/8 MHz @ DVB-T					
Possible frequency shift	-4 ... +4 MHz (0,5 MHz steps)					
Connector	1 × F-female					
Test port	-	-	-	-	1 × F-female (-30 dB)	
Impedance	75 Ω					
Output level adjustable	75 ... 95 dBμV @ DVB-C/DVB-T				80...100 dBμV @ DVB-C 77...98 dBμV @ DVB-T	
Output modulation						
Compliance	DVB-T (EN 300 744) DVB-C (EN 300 429/ITU-TJ.83 Annex A/C)					
Type	QAM16, QAM32, QAM64, QAM128, QAM256 @ DVB-C QPSK, QAM16, QAM64 @ DVB-T					
MER	≥ 40 dB @ DVB-C ≥ 36 dB @ DVB-T					
Bit rate, max	50.87 Mbps @ DVB-C 31.668 Mbps @ DVB-T					
FFT	2K mode @ DVB-T					
FEK	1/2, 2/3, 3/4, 5/6, 7/8 @ DVB-T					
Guard interval	1/4, 1/8, 1/16, 1/32 @ DVB-T					
Symbol rate	1 ... 7.5 Mbaud/s					
Interfaces						
Control/CAS	1 × RJ-45					
Compliance Control/CAS	IEEE 802.3, 100 Base-T					
Supported configuration protocols	HTTP, SNMP v1, SNMP v2c, AXING SMARTPortal**					
General						
Operating voltage	100 ... 240 VAC/50 ... 60 Hz					
Power consumption	50 W	50 W	55 W	60 W	60 W	60 W
Equipotential bonding connection	4 mm²					
Operating temperature range (acc. to EN 60065)	-10°C...+50°C					
Dimensions (W × H × D) appr.	436 × 253 × 47 mm				480 × 253 × 47 mm	
Weight	2.350 kg	2.600 kg	2.750 kg	3.000 kg	2.900 kg	3.150 kg
Comments	* with software extension only ** encrypted, cloud-based application for configuration, monitoring and remote maintenance					