

EOC

Ethernet over Coax

Building Highspeed 1800 Mbps Networks Over Coax Cable

EOC 1-32 | Ethernet over Coax | 1800 Mbps

- ✓ Peer-to-Peer
- ✓ Transmission range 5...204 MHz
- ✓ Net data rate 1800 Mbps (PHY)
- ✓ 128 bit-AES-Encryption
- ✓ 2 x RJ 45 Connectors
- ✓ Incl. external switching power supply

EOC 2-32 | Ethernet over Coax | WiFi

- ✓ Same as EOC 1-32
- ✓ WiFi for Tablet, Smartphone, Notebook etc.
- ✓ 2,4/5 GHz Band



Available devices:

EOC00132 | EoC 1-32 | Ethernet over Coax
EOC00232 | EoC 2-32 | Ethernet over Coax | WiFi

Accessories:

TZU04005 | RF- and EoC inserter
TZU01968X | High-pass filter | return path blocker

Ethernet over Coax - as easy as a switch!

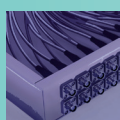
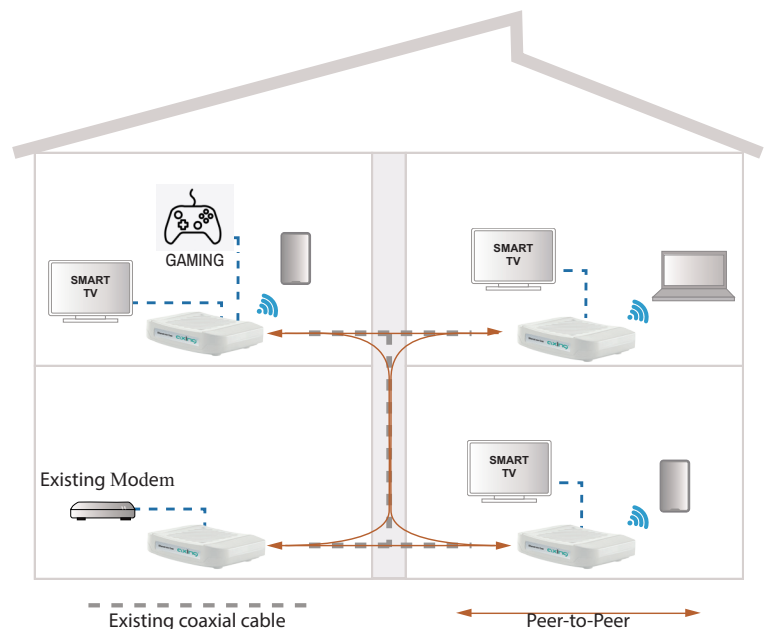
The EoC devices use the G.hn standard to set up an encrypted Ethernet-over-Coax network via the coaxial cable of the TV cabling (TV and radio will of course continue to be transmitted). This EoC network acts like a large switch (in the example with 8 ports) distributed throughout the whole house.

Two Ethernet-capable devices (PCs, notebooks, servers, printers, smart TVs, etc.) can be connected to each EoC device. Additionally the EoC 2-32 is equipped with WiFi. EOC 1-32 and EOC 2-32 use the frequency range from 5 to 204 MHz and achieve a net data rate of 1800 Mbps* (PHY) due to the bandwidth possible on coax.

This is possible while sharing the coax with normal TV & FM signals- including Satellite.

Typical scenarios can be residential buildings or offices where LAN wiring is not possible/desired.

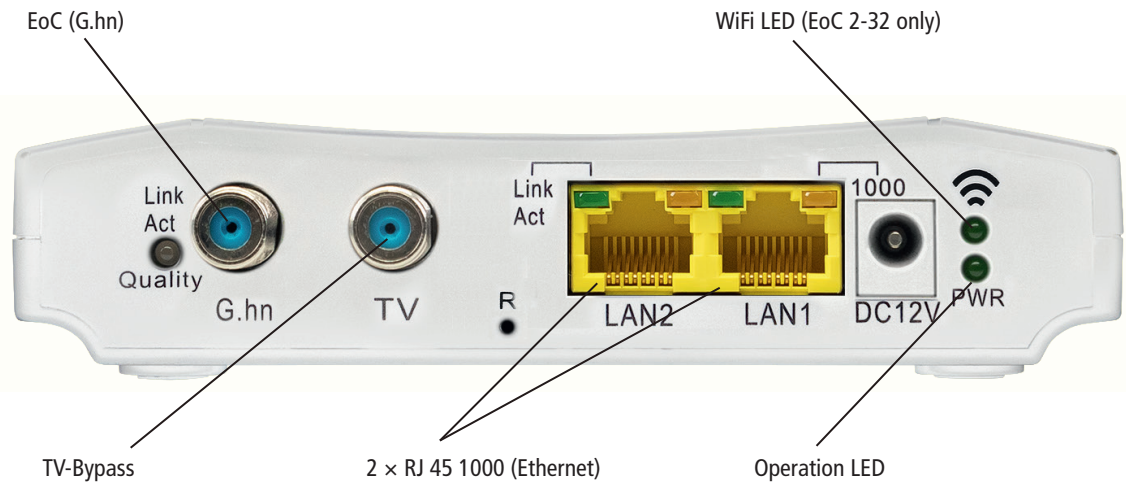
*The data rate indicates the data throughput between the EoC devices. For technical reasons, a maximum of 1000 Mbps is available at each Ethernet interface.



AXING New Zealand Through
Digital Imports Ltd
Phone 03 344 5417

admin@digitalimports.co.nz
www.axing.com

Rear side



Type	EoC 1-32	EoC 2-32
Frequency range		5...1800 MHz
Frequency range transmission		5...204 MHz
Frequency range TV bypass		258...1800 MHz
Maximum allowed attenuation in coaxial network		77 dB
Transmission level in coaxial network		113 dB μ V \pm 1dB
EoC		
Standard	ITU-T G.9960/G.9961 G.hn over Coax	
Net data rate (PHY)	1800 Mbps*	
Encryption	AES 128 Bit	
Max. number of devices in EoC network	16	
Connectors (G.hn TV)	2 x F-female	
Interfaces		
Ethernet connectors (LAN)	2 x RJ 45	
Ethernet standards	IEEE 802.3u 100BaseT Fast Ethernet, IEEE 802.3ab 1000BaseT Gigabit Ethernet	
WiFi standard	-	MIMO 2x2 IEEE 802.11b/g/n/a/ac
WiFi encryption	-	WEP, WPA/WPA2, WPA/WPA2 m. PSK
General		
Operating voltage	12 VDC	
Power consumption	4 W	8 W
Operating temperature range	0°C...40°C	
Dimensions (W x H x D) appr.	130 x 95 x 32 mm	
External accessories		
Switching power supply	100...240 V~/50...60 Hz 12 V=/0.5 A	100...240 V~/50...60 Hz 12 V=/1 A
General		
Comments	* The data rate indicates the data throughput between the EoC devices. For technical reasons, a maximum of 1000 Mbps is available at each Ethernet interface.	

