



EZIFIX FASTENING SYSTEMS



Ask about our EziFix toolbox selection of display boxes

Bonds in seconds | Adheres for lifetime Internal and external use



Installation tools
Primer and applicators
Very High Bond Tape
Cable Saddles
Pipe/Conduit Clips
Threaded Boss Retainers
413 Socket Holders



APPLICATION PROCEDURE

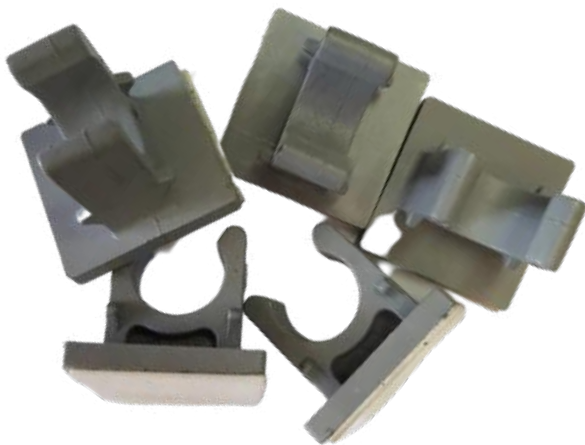
- Pre-Plan area to be primed
- Shake primer can for 1 minute
- Apply primer to surface
- Allow 20 minutes drying time for primer
- Remove adhesive cover
- Can be installed from floor level up to 4 metres
- Using the appropriate tool, press the product onto the pre primed surface
- Fastener is ready for full load immediately
- You now have a strong bond which will increase in strength as time goes on

No Drilling - No Holes - No Mess

Tested by British Standards Institute Report No. 285/4000208



CONDUIT / PIPE CLIPS



PRODUCT CODES

16mm Pipe Clip - EF1584

20mm Pipe Clip - EF1684

25mm Pipe Clip - EF1784

Ezi-Fix Pipe Clips are manufactured from virgin Nylon 6 a special type of nylon which is robust.

We add Ultra-Violet resistance into the mix using the very top of the range 3M adhesives tape as well as our own ultra-high-bond primer.

The pipe clips are ideal for securely holding conduits in place when carrying out new and refurbishing work.

16mm Pipe Clip - 100 units per bag, available in Grey.

20mm Pipe Clip - 100 units per bag, available Grey.

25mm Pipe Clip - 100 units per bag, available in Grey.

Other colours are available on request of bulk quantities:

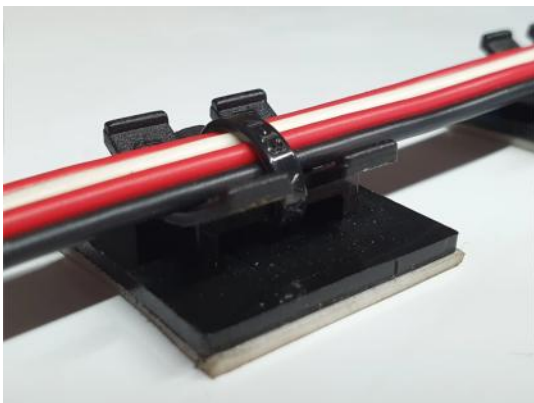
- Orange
- Red
- Green
- White
- Black



Contact Sales for Pricing and Product Display Bins



CABLE ANCHORS



The **Ezi-Fix Anchors** are a simple tool that are just as simple to use. Every Ezi-Fix Anchor is supplied with a suitably sized Ezi-Fix Cable Tie.

Built of high impact resistant nylon with added U.V. light inhibitor, the anchors are backed with 3M double side VHB adhesive tape.

Other colours available for bulk ordering

Square cable anchors: **16x20mm** - Safe Working Load 1Kg

30x30mm - Safe Working Load 5Kg

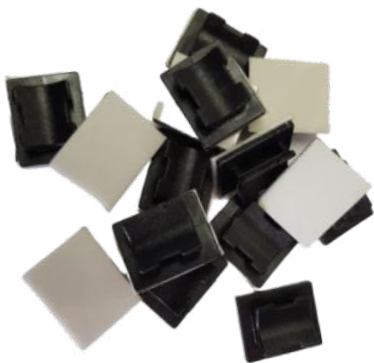
50x50mm - Safe Working Load 10Kg

PRODUCT CODES

16mm Saddle - Black - EF0994
16mm Saddle - Natural - EF0904

30mm Saddle - Black - EF1394
30mm Saddle - Natural - EF1304
30mm Saddle - Blue - EF1334

50mm Saddle - Black - EF2294
50mm Saddle - Natural - EF2204



Contact Sales for Pricing and Product Display Bins

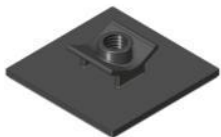


OTHER ACCESSORIES



Threaded Boss Fastener

Boss Fasteners to accept M6, M8 and M 10 Bolts with a 50x50mm base the Boss will support a S.W.L of 10Kg



M6 - Product Code: EF2094
M8 - Product Code: EF2994
M10 - Product Code: EF2194

413 Socket Base

Socket base Fasteners are suitable for bubble plugs and junction boxes (square or round) S.W.L 1Kg



Product Code: EF1891

UHB Primer

FX-10 Ultra High Bond Primer the key to the Ezi-Fix System 150mg Aerosol Can's are available in a clear horizontal spray or a vertical spray with an orange fleck to see where you have been.



Clear Horizontal Spray
Product Code: EF0033

Orange Flecked Vertical Spray
Product Code: EF0034

Cable Ties

There is not much to say about cable ties as we all know how to use them. The edge we have is our price, so check out the others and see how we compare.



Black 380 x 4.8mm: EF4448B
Black 300 x 3.6mm: EF4336B
White 200 x 4.8mm: EF4248W
Black 200 x 4.8mm: EF4248B
Black 150 x 3.6mm: EF4136B

Ezi-Screw

The original Ezi-Screw Gib Anchor Available in bags of 100



Product Code: EF5414

VHB Double Sided Tape

Very High Bond Tape the key to the Ezi-Fix System can be used on a variety of substrates; including metals, glass and high surface energy paints or plastics.



30mm x 11m Roll: EFAA11
30mm x 33m Roll: EF3033
50mm x 11m Roll: EF5011

Shims

Our shims are made from robust polypropylene and colour coded for easy selection. Available in 1.0, 1.5, 2.0, 3.0, 5.0, 10mm in bags of 1,000 or 10,000 each size.



Insulation Fasteners

Bags of 100



Contact Sales for Pricing and Product Display Bins



INSTALLATION TOOLS



Universal Head

For applying most Ezi-Fix Fasteners
Not compatible with the Pipe Clips



Product Code: EF0092A

Pipe Clip Head

For applying the Pipe Clip Fasteners



Product Code: EF0093A

30mm Saddle Head

For applying the 30mm Saddles



Product Code: EF0094A

Primer Head

For applying vertical primer from
a distance.



Product Code: EF0099A

Mini Applicator Tool

T200 Mini applicator tool for
applying easy pressure to Ezi-Fix
adhesive products by using this
tool you will assure the fixture
process is met. Simple hand
push - pump action. Available
with universal head or pipe clip
head. 150mm Long



Universal Head: EF0100B
Pipe Clip Head: EF0100A

Applicator Tool

T400 Applicator tool for applying
easy pressure to Ezi-Fix adhesive
products by using this tool you will
assure the fixture process is met.
Simple hand push - pump action
Interchangeable applicator heads.
400mm Long.



Universal Head: EF0101B
Pipe Clip Head: EF0101A

Maxi Applicator Tool

T1500 Extension applicator tool
for applying easy pressure to
Ezi-Fix adhesive products by
using this tool you will assure
the fixture process is met.
Simple hand push - pump action
with high reach so no ladder is
needed. Interchangeable
applicator heads.
1600mm extends to 3M



No Head: EF0103
Universal Head: EF0103A

Maxi Applicator Tool

Primer Tool 1500mm extends to
3M. Used to apply primer with
high reach so no ladder required
for use with Orange primer,
supplied with Primer Head.



Product Code: EF0105

Contact Sales for Pricing and Product Display Bins



Ezi-Fix Fastening System



1



SHAKE THE CAN FOR AT
LEAST 1 MINUTE

2



PLACE THE CAN INTO THE
PRIMER TOOL

3



SPRAY THE SURFACE
WHERE THE FASTENER IS
TO BE ATTACHED

4



PRIMED SURFACE MUST BE
FLAT CLEAN & DRY

5



PLACE THE ADHESIVE FAS-
TENER INTO THE TOOL

6



REMOVE CLEAR PROTECT-
TIVE COVER

7



FIX THE ADHESIVE TO THE
PRIMED SURFACE

**FASTENER
IS NOW READY
TO HAVE LOAD
ATTACHED**



Ezi-Fix Fastening System



The Ezi-Fix Fastening System is a unique range of cable and pipe fixings based on structural self-adhesive clips. Ezi-Fix allows fixings to be made with no drilling, no dust, no noise and no mess!

It is ideal for use in environments such as clean rooms, data centres, hospitals, food factories or anywhere where dirt and noise can cause problems.

As the fixing requires no penetration of the surface it is ideal for use on glass, external building sheeting, hygienic wall panels etc.

The fixings withstand a very wide range of temperatures and can be used on any smooth, dry, clean surface internally or externally.

Installation is quick and simple; spray on the primer to the surface, allow to dry off, remove adhesive backing and apply the fixing, apply pressure to the fixing using the appropriate tool and job done!

For further technical information and advice about this product range please contact our experienced sales team.



Contact Sales for Pricing and Product Display Bins



Ezi-Fix Fastening System



DIGITAL
IMPORTS LTD

