



EZIFIX FASTENING SYSTEMS

“NO DRILLING”
“NO NOISE”
“NO DUST”
“NO MESS”

- Significant labour reduction
- Suitable for light cable tray
- Suitable for light pipework
- Signage installation
- Safety first method
- Colour coded
- Install from floor level
- Eliminate all drilling
- Approved by authorities

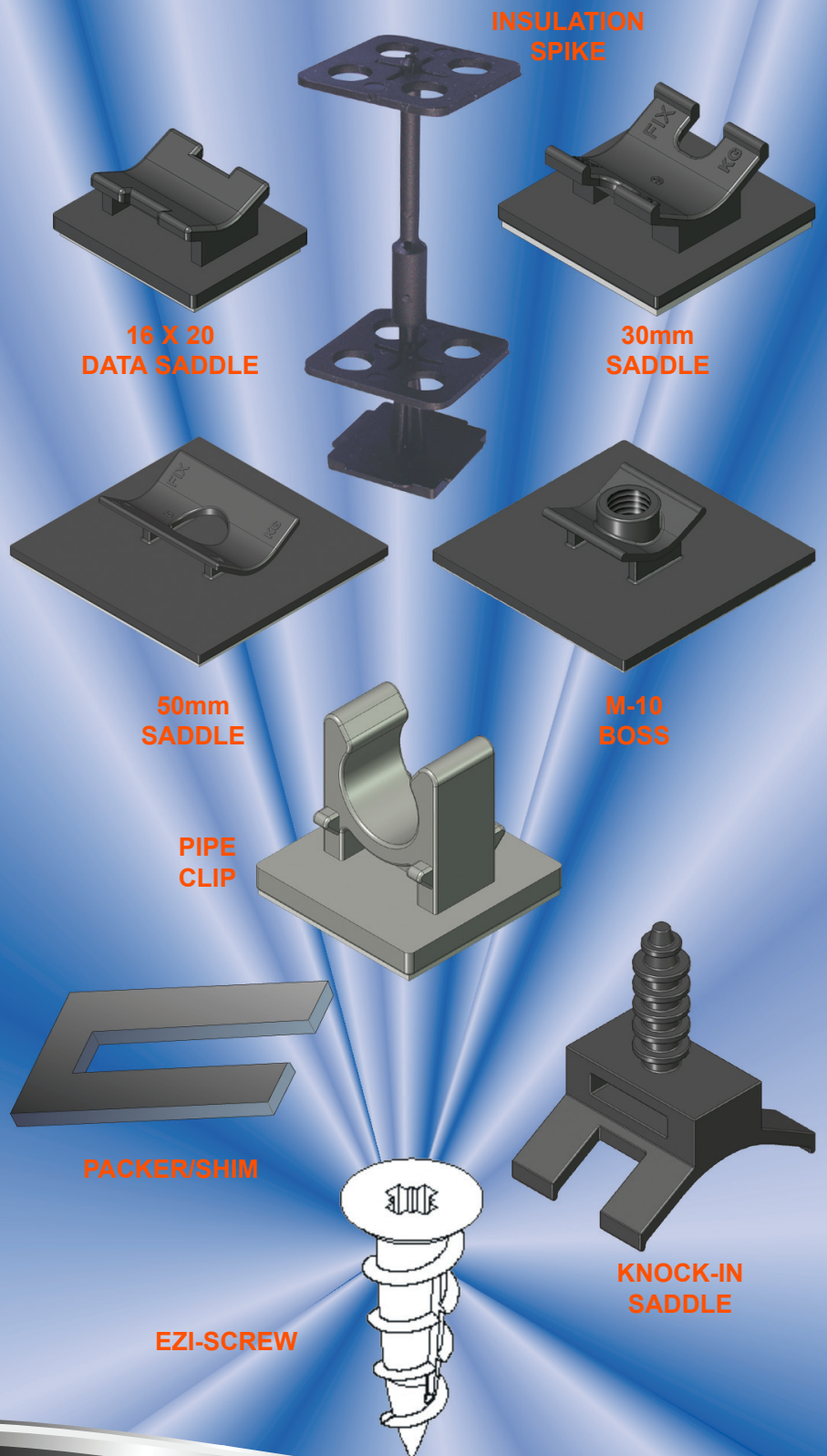
APPLICATION PROCEDURE

- Pre-plan area to be primed
- Shake primer can for 1 minute
- Apply primer to surface
- Allow 20 minutes drying time for primer
- Remove adhesive cover
- Can be installed from floor level up to 4 metres
- Using the appropriate tool, press the product onto the preprimed surface
- Fastener is ready for full load immediately
- You now have a strong bond which will increase in strength as time goes on.



AUSTRALIAN MADE

Tested by British Standards Institute
Report No. 285/4000208





www.ezifix.com.au

INSTALLATION OF ADHESIVE FASTENER

1

PRE-PLAN THE
AREA WHERE THE
FASTENER WILL
BE LOCATED

2



SHAKE THE CAN FOR AT LEAST 1 MIN

3



PLACE THE CAN INTO THE PRIMER TOOL

4



SPRAY THE SURFACE WHERE THE
FASTENER IS TO BE ATTACHED

5



PRIMED SURFACE MUST BE FLAT,
CLEAN & DRY

6



PLACE THE ADHESIVE FASTENER
INTO THE TOOL

7



REMOVE CLEAR PROTECTIVE COVER

8



FIX ADHESIVE TO THE PRIMED SURFACE

9

FASTENER
IS NOW READY
TO HAVE LOAD
ATTACHED

10

FASTENER LOAD
MUST NOT
EXCEED THE S.W.L
AT ANY TIME

NOW IT'S CLEAN AND EASY TO SECURE, CABLE OR PIPE

Saddle components molded from Zytel® PA66 nylon resin perform a key support function in the Ezi-Fix system for fastening electrical cable, conduit and pipe to wall or ceiling surfaces.

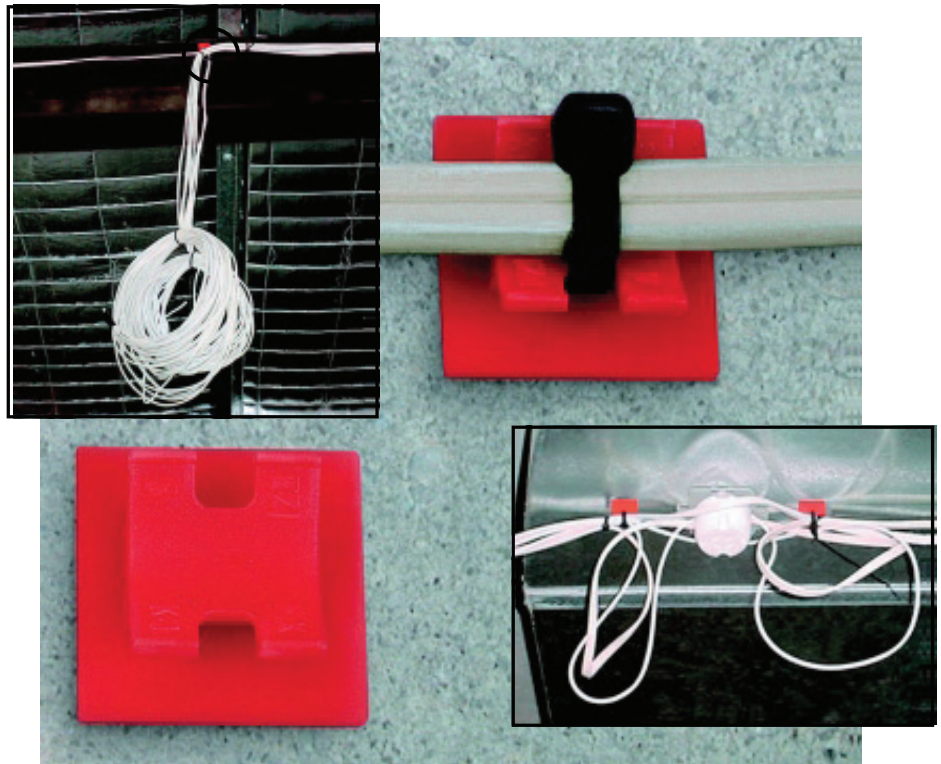
Supplied with an adhesive surface protected by a removable cover, the Saddles are quickly and easily mounted on pre-primed surfaces with the aid of spring-loaded application tools. The Saddles come in two sizes: a 30mm square cable saddle rated by the manufacturer for loads up to 5kg (11lb) and a 50mm rated for cable or pipe loads up to 10kg (22lb). Both have integrally molded provision for use with reusable cable ties, also available from Ezi-Fix.

After 15 years of proven commercial installations in Australia, the manufacturer is now expanding into global markets. The system has been tested by the British Standards Institute. See report no. 285/4000208

Manufacturer



Queensland, Australia
P: (07) 5456 4277
F: (07) 5456 4377
www.ezifix.com.au
E: sales@aplastic.com.au



Benefits Gained

Clean. Easy installation. Unlike other cable and pipe fasteners, mounting of Ezi-Fix fasteners requires no drilling and produces no noise or dust.

Flat surface aids in bonding. The low warp and consistent quality of Zytel® helps Ezi-Fix produce parts with the flat surfaces required for good adhesion to walls and ceilings.

Building code acceptance. The saddles are molded from Zytel® nylon resin with a UL94B V2 flammability rating, a requirement of many building authorities.

Molding productivity. The high flow and consistent molding performance Zytel® permits fast-cycle production of saddles of uniformly high quality.

Technical support. A DuPont specialist provided valuable assistance in optimising tooling and molding parameters during Ezi-Fix's transition from outside sourcing to in-house production.

Material Selected, and Why
Zytel® 101F meets needs for high strength, a UL-94 V2 rating, and outstanding molding performance.

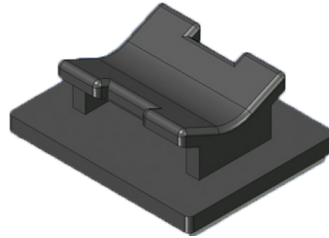
For More Information...



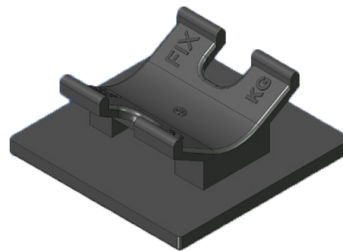
The miracles of science®

ADHESIVE SADDLES FASTENERS

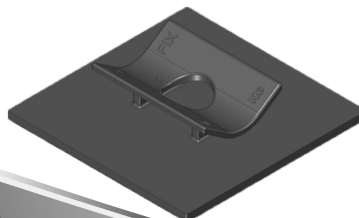
16mm x 20mm DATA SADDLE S.W.L. 1KG				
DESCRIPTION	QTY/BAG	BAG/BOX	CODE	COLOUR
16x20 Data Saddles + Cable ties	100	10	0904X	Natural
16x20 Data Saddles + Cable ties	100	10	0994X	Black



30mm SADDLE S.W.L. 5KG				
DESCRIPTION	QTY/BAG	BAG/BOX	CODE	COLOUR
30mm Saddles + Cable ties	100	10	1304X	Natural
30mm Saddles + Cable ties + Primer (Contractor Pack)	100	8	1304P	Natural
30mm Saddles + Cable ties	100	10	1324X	Red
30mm Saddles + Cable ties + Primer (Contractor Pack)	100	8	1324P	Red
30mm Saddles + Cable ties	100	10	1334X	Blue
30mm Saddles + Cable ties + Primer (Contractor Pack)	100	8	1334P	Blue
30mm Saddles + Cable ties	100	10	1394X	Black
30mm Saddles + Cable ties + Primer (Contractor Pack)	100	8	1394P	Black

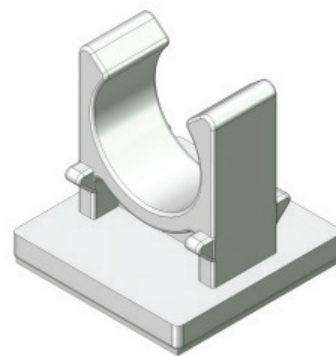
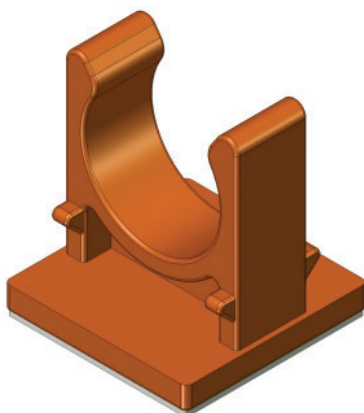
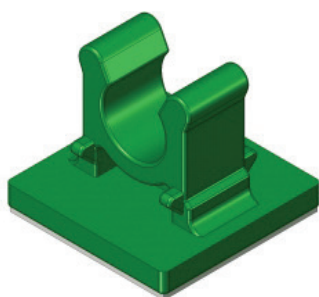


50mm SADDLE S.W.L. 10KG				
DESCRIPTION	QTY/BAG	BAG/BOX	CODE	COLOUR
50mm Saddles	100	5	2204X	Natural
50mm Saddles	100	5	2234X	Blue
50mm Saddles	100	5	2294X	Black



ADHESIVE PIPE CLIP FASTENERS

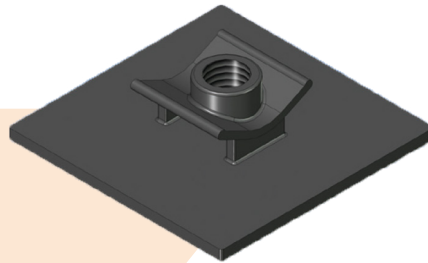
DESCRIPTION	QTY/BAG	BAG/BOX	CODE	COLOUR
12mm Pipe Clip	100	8	1454X	Green
16mm Pipe Clip	100	8	1554X	Green
16mm Pipe Clip	100	8	1584X	Grey
20mm Pipe Clip	100	7	1614X	White
20mm Pipe Clip	100	7	1624X	Red
20mm Pipe Clip	100	7	1664X	Orange
20mm Pipe Clip	100	7	1694X	Black
25mm Pipe Clip	100	7	1714X	White
25mm Pipe Clip	100	7	1724X	Red
25mm Pipe Clip	100	7	1764X	Orange
25mm Pipe Clip	100	7	1784X	Grey
25mm Pipe Clip	100	7	1794X	Black



*PLEASE CHECK FOR AVAILABILITY AND COLOUR

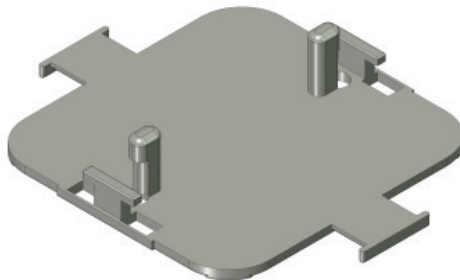
50mm THREADED BOSS FASTENERS

50mm THREADED BOSS S.W.L. 10KG				
DESCRIPTION	QTY/BAG	BAG/BOX	CODE	COLOUR
50mm M6 Boss Thread	100	5	2084X	
50mm M10 Boss Thread	100	5	2194X	Black
50mm M8 Boss Thread	100	5	2984X	



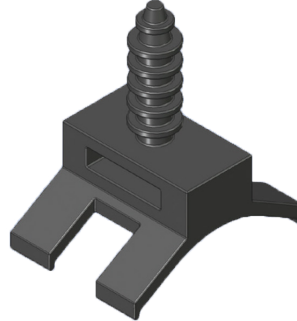
ADHESIVE 413 SOCKET BASE FASTENERS

SOCKET BASE S.W.L. 1KG				
DESCRIPTION	QTY/BAG	BAG/BOX	CODE	COLOUR
Socket Base + 300 Ties + Primer	25	6	1891P	Black
Socket Base	100	5	1894X	Black/Grey



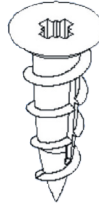
KNOCK-IN SADDLE

DESCRIPTION	QTY/BAG	BAG/BOX	CODE	COLOUR
Knock-In Saddle + Ties	100	5	5394P	Black
Knock-In Saddle + Ties	100	15	5394X	Black



EZI-SCREW

DESCRIPTION	QTY/BAG	BAG/BOX	CODE	COLOUR
Ezi-Screw	100	10	5414P	White
Ezi-Screw	100	40	5414X	White



PACKER/SHIM

DESCRIPTION	QTY/BAG	BAG/BOX	CODE	COLOUR
Packer/Shim 1.0mm x 90mm	100	1	5494-1	White
Packer/Shim 1.0mm x 90mm	BULK	1000	5494-1M	White
Packer/Shim 1.5mm x 90mm	100	1	5494-1.5	Cream
Packer/Shim 1.5mm x 90mm	BULK	2000	5494-1.5M	Cream
Packer/Shim 2.0mm x 90mm	100	1	5494-2	Red
Packer/Shim 2.0mm x 90mm	BULK	2000	5494-2M	Red
Packer/Shim 3.0mm x 90mm	100	1	5494-3	Purple
Packer/Shim 3.0mm x 90mm	BULK	1500	5494-3M	Purple
Packer/Shim 5.0mm x 90mm	100	1	5494-5	Grey
Packer/Shim 5.0mm x 90mm	BULK	1000	5494-5M	Grey
Packer/Shim 10.0mm x 90mm	100	1	5494-10	Black
Packer/Shim 10.0mm x 90mm	BULK	600	5494-10M	Black

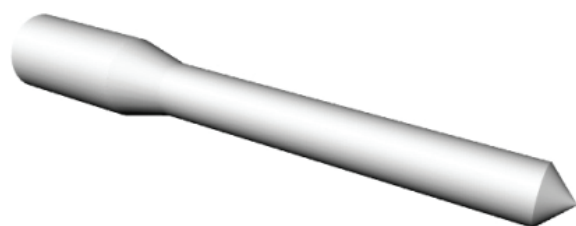
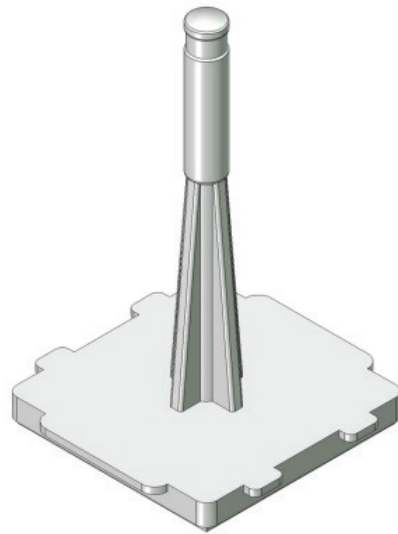


COLOUR CODED
FOR EASE OF USE

THE PROVEN, SAFE, SURE WAY TO FIX CABLE, CONDUIT, INSULATION & LIGHT PIPING TO MOST SURFACES

ADHESIVE INSULATION FASTENERS

DESCRIPTION	QTY/BAG	BAG/BOX	CODE	COLOUR
Spike + Retainer (50mm)	100	8	1094X	Black
Spike + Retainer (50mm) + 2 Primer	100	8	1094P	Black
Retainer (For wall stand-off)	100	10	1194X	Black
Extension (50 - 100mm)	100	10	1294X	Black



INSTALLATION TOOLS

DESCRIPTION	CODE
Mini tool c/w 0093A Head	0100B

150mm long
for Pipe Clips - 12mm, 16mm, 20mm, 25mm



DESCRIPTION	CODE
Mini tool c/w 0094A Head	0100C

150mm long
for 30mm Saddles



DESCRIPTION	CODE
Mini tool Choose Head	0100C

400mm long
Interchangeable applicator heads adjustable handle
A = Universal Head
B = Pipe Clip Head
C = 30mm Saddle Head



DESCRIPTION	CODE
Extension Tool Choose Head	0103

1500mm extends to 3m
Interchangeable applicator heads adjustable handle
A = Universal Head
B = Pipe Clip Head
C = 30mm Saddle Head



DESCRIPTION	CODE
Primer tool c/w 0099A Head	0105

1600 tool extends to 3m



APPLICATOR HEAD (c/w compression spring & bolt assembly)

			
Universal Head	Pipe Clip	30mm Saddle	Primer Head
0092A	0093A	0094A	0099A

FX-10 PRIMER AEROSOL

DESCRIPTION	QTY/BAG	BAG/BOX	CODE	COLOUR
Clear Primer with horizontal spray nozzle (150gm spray can)	1 can	12	0033X	Clear
Orange Primer with verticle spray nozzle (150gm spray can)	1 can	12	0034X	Orange

Dangerous Cargo
 UN#: 1950
 Class: 2.1
 Packaging: II



UHB PRIMER ADHESIVE AEROSOL

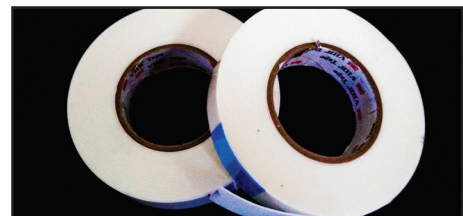
DESCRIPTION	QTY/BAG	BAG/BOX	CODE	COLOUR
Clear Primer with horizontal spray nozzle (150gm spray can)	1 can	12	AP150C	Clear
Orange Primer with verticle spray nozzle (150gm spray can)	1 can	12	AP150O	Orange
Clear Primer with horizontal spray nozzle (45gm spray can)	1 can	12	AP45C	Clear

Dangerous Cargo
 UN#: 1950
 Class: 2.1
 Packaging: II



TAPE

DESCRIPTION	QTY/BAG	ROLL	CODE	COLOUR
30mm 4951 Tape	10.0m	1	AA10	White





www.ezifix.com.au

EZIFIX FASTENING SYSTEMS

PROCEDURE FOR CLEANING METAL SURFACES

Ensure surface area is clean from loose material and oil or wax contaminants. If the area has an oxide film on the surface then you will need to clean it off also. This can be done by scraping or scouring the area and then wiping with a clean rag.

Shake primer can until contents are mixed. Spray lightly over a slightly larger area than the fastener base and wipe with a clean rag in one action in one direction only. (Note: do not wipe in a circular action as this will reintroduce contaminants back onto the surface).

This will clean the area of any oil or wax from the manufacturing process. Allow the primer that remains on the area to dry before applying the fastener.

If you require a stronger bond, re-spray the area lightly with primer and allow to dry.

THE FOLLOWING PROCEDURE SHOULD BE STRICTLY ADHERED TO

1. Ensure that the surface that you wish to apply the product to is clean, dry, flat and is suitable e.g. the surface is solid and in the case of painted surfaces, is not affected by the primer (protect area).
2. Shake the primer can for one (1) minute to mix correctly.
3. Apply the primer sparingly onto the surface, covering an area just larger than the base of the product.
4. It is crucial that the primer is dry before applying the fastener. It is recommended that twenty (20) minutes be allowed, although depending on ambient temperature and surface material, this can be shorter.
5. Position fastener into the appropriate tool and remove protective cover on the adhesive tape.
6. Position the fastener onto the pre-primed surface, fully compressing the tool to its spring loaded set limit to ensure maximum bond strength. This is best done with a steady pumping action.

The fastener is now ready for use

IMPORTANT NOTICE: User is responsible for determining whether the Ezifix product is fit for a particular purpose and suitable for the user's method of application. Please remember that many factors can affect the use and performance of Ezifix product in a particular application, some of which are uniquely within the user's knowledge and control, it is essential that the user evaluate the Ezifix product to determine whether it is for a particular purpose and suitable for the user's method of application.

THE PROVEN, SAFE, SURE WAY TO FIX CABLE, CONDUIT, INSULATION & LIGHT PIPING TO MOST SURFACES.



www.ezifix.com.au

EZIFIX FASTENING SYSTEMS

STATEMENT OF CONFORMANCE AND WARRANTY

Ezifix Fastening Systems products conform to various standards and regulations, when a particular product is used for the purpose intended by the manufacturer, under the conditions and installation procedure set out the product will remain effective for the lifetime of any building.

1. The total loading (weight) applied to the product never exceeds the designed loading (weight) limits during the life of the product.
2. The product is installed on to surface in accordance with our specifications by individuals who have been trained and certified by Ezifix Fastening Systems, and install the product correctly.
3. Except as set out above, Ezifix Fastening Systems excludes all expressed or implied conditions and warranties regarding its products or the installation of its products, except any implied condition or warranty, the exclusion which would contravene any statute, to replacement value.
4. Ezifix Fastening Systems will in no circumstances be liable for any consequential loss that may incur.
5. Ezifix Fastening Systems offers free training to individuals who will install our product. This usually takes place at the product user's place of work or at a place agreed by both parties. The trained individual is issued with a certificate from Ezifix confirming that the individual has completed training in relation to the installation of the relevant product. Each certificate has an individual serial number and Ezifix maintains a register of certificates issued, which is available for inspection.

PLEASE VISIT OUR WEBSITE www.ezifix.com.au

THE PROVEN, SAFE, SURE WAY TO FIX CABLE, CONDUIT, INSULATION & LIGHT PIPING TO MOST SURFACES.