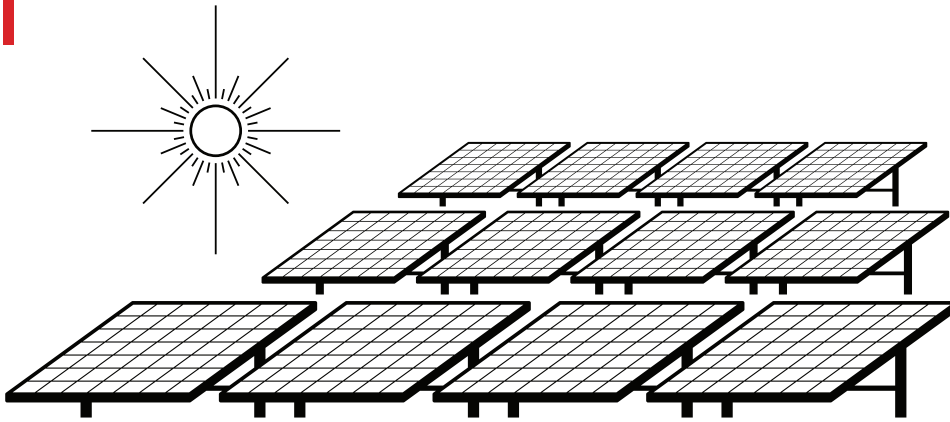


Solar Panels



Photovoltaic System

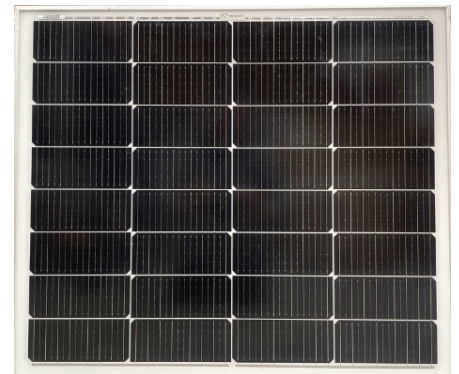


Off-the-Grid (OTG)

100W Mono Crystalline Panel (12V)

PV100

- 5 year mechanical warranty
- 25 year linear warranty to 85% power output
- Maximum Power (Pmp) 100W
- Maximum Operating Current (Imp) 5.33A
- Maximum Operating Voltage (Vmp) 18.76V
- Open Circuit Voltage (Voc) 26.79V
- Short Circuit Current (Isc) 5.69A
- Series Fuse 15A
- Withstand high wind (2400Pa) and snow (5400Pa) loads
- Anti-reflective highly transparent, low iron tempered glass
- Module Efficiency 19.68
- 800(H)*680(W)*30(D)



195W Mono Crystalline Panel (12V)

PV195

- 5 year mechanical warranty
- 25 year linear warranty to 85% power output
- Maximum Power (Pmp) 195W
- Maximum Operating Current (Imp) 10.60A
- Maximum Operating Voltage (Vmp) 23.06V
- Open Circuit Voltage (Voc) 19.3V
- Short Circuit Current (Isc) 10.10A
- Series Fuse 15A
- Withstand high wind (2400Pa) and snow (5400Pa) loads
- Anti-reflective highly transparent, low iron tempered glass
- Module Efficiency 20.27
- 1170(H)*780(W)*35(D)

290W Mono Crystalline Panel (12V/24V)

PV290

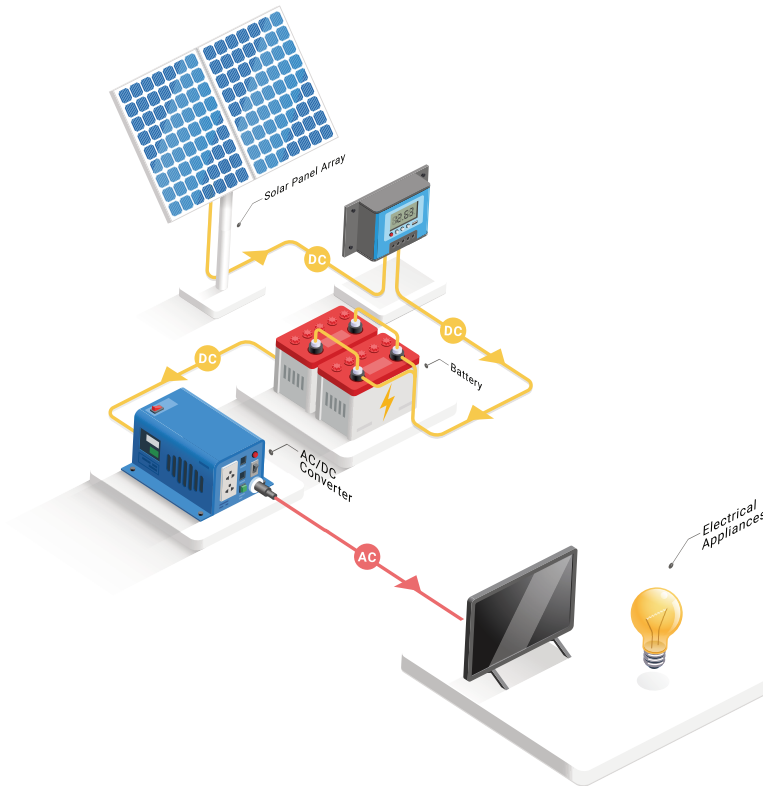
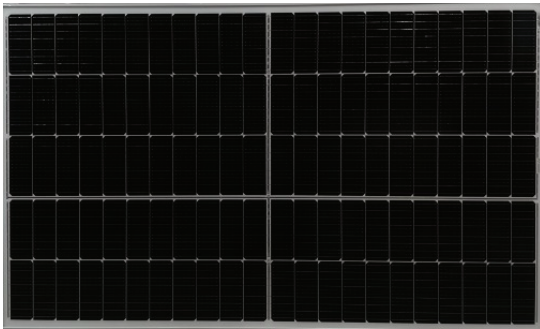
- 5 year mechanical warranty
- 25 year linear warranty to 70% power output
- Maximum Power (Pmp) 290W
- Maximum Operating Current(Imp) 8.91A
- Maximum Operating Voltage (Vmp) 32.55V
- Open Circuit Voltage (Voc) 39.50V
- Short Circuit Current (Isc) 9.20A
- Series Fuse 15A
- Withstand high wind (2400Pa) and snow (5400Pa) loads
- Anti-reflective highly transparent, low iron tempered glass
- Module Efficiency 18.45
- 1645(H)*995(W)*40(D)



325W Mono Crystalline Panel (12V/24V)

PV325

- 5 year mechanical warranty
- 25 year linear warranty to 85% power output
- Maximum Power (Pmp) 325W
- Maximum Operating Current (Imp) 10.19A
- Maximum Operating Voltage (Vmp) 31.9V
- Open Circuit Voltage (Voc) 38.85V
- Short Circuit Current (Isc) 10.7A
- Series Fuse 20A
- Withstand high wind (2400Pa) and snow (5400Pa) loads
- Anti-reflective highly transparent, low iron tempered glass
- Module Efficiency 19.97
- 1640(H)*992(W)*35(D)



43 Canada Cres, Hornby South, Christchurch Ph 03 344 5418 www.digitalrv.co.nz



DIGITAL RV
digital products & services for the mobile market

