

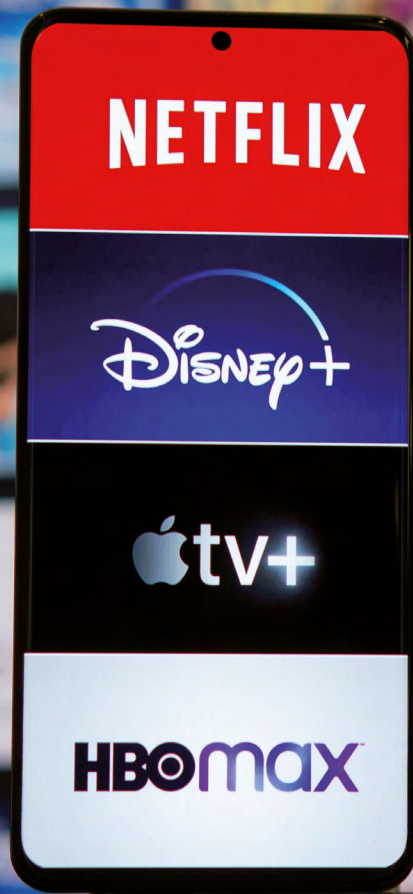
Cast Connect
The professional streaming solution

FAGOR
ELECTRÓNICA



Multimedia
Solutions

Enjoy your favourite content at any time



Welcome to Fagor Multimedia Solutions and its Cast Connect solution, where digital transformation comes to life!

Cast Connect is a secure, reliable and cost-effective streaming service for the hotel. Easy and intuitive to use and compatible with all iOS and Android streaming-enabled apps, with Fagor Multimedia Solutions, your digital transformation is guaranteed!



Improves loyalty of existing guests and generates interest in potential guests



Reliable solution based on Google Chromecast



Compatible with any TV with HDMI



Possibility of integration with PMS



Prevent theft and tampering with CastLock option

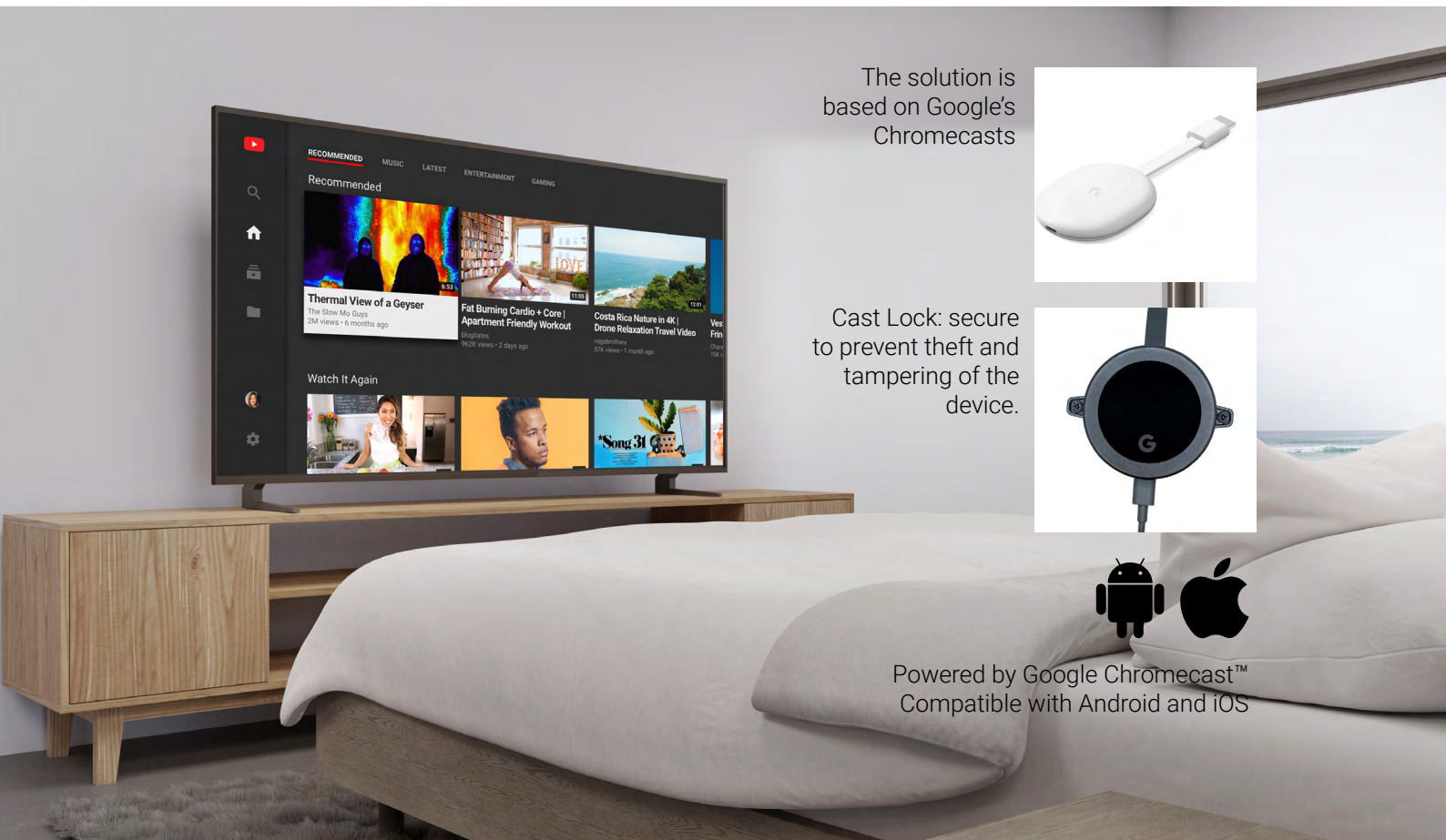
The best entertainment: feeling at home



Nowadays the vast majority of guests are signed up to a streaming platform and with Cast Connect they will be able to continue to enjoy their favourite programme on the hotel's TV, from their phone, tablet, computer,...

Cast Connect: Streaming services

Google Chromecast-based solution



The solution is based on Google's Chromecasts



Cast Lock: secure to prevent theft and tampering of the device.



Powered by Google Chromecast™
Compatible with Android and iOS

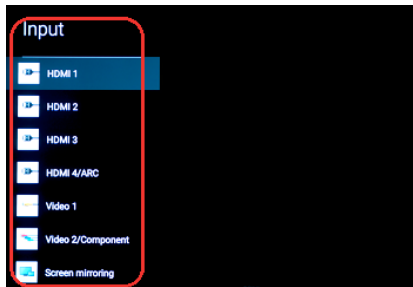
- One-step authentication via QR code.
- Based on Google Chromecast (*).
- Compatible with IOS and Android.
- Secure guest authentication.
- Isolation of communications between rooms.
- Multilanguage
- Monitoring of installed Chromecast
- Usage analytics: platform usage, usage time ...
- Anti-theft and reset prevention with CAST-Lock accessory.
- Compatible with all TVs, only one HDMI input required.
- With the same WiFi network of the hotel (always fulfilling the necessary network requirements).
- Can be integrated with PMS to delete sessions after checkout and customise the home screen to the guest's language and welcome message.
- Hotel promotion slideshow on the home screen with images, videos, web pages, widgets or HLS streaming.
- Scheduled deletion of sessions.
- Chromecast device support: 3GEN, 4GEN (HD and 4K) and Philips TV with integrated Chromecast.
- Netflix and Apple TV supported on 4GEN devices.
- Network diagnostics as an installation aid.
- API for integration with other solutions.
- Remote monitoring: Chorus/Sites manager.
- In systems with Philips TV with integrated Chromecast, the Cast Connect server complements the casting service, adding usage analytics, guest personalisation and hotel branding.(*)

*Chromecast is a trademark of Google LLC.

How Cast Connect works?

It is as simple as pushing a button.

Main menu




CONNECT

Using the remote control, connect to the HDMI output of the Chromecast device.

CHROMECAST connection



CONFIGURE

1. Connect the mobile phone to the wifi.
2. Scan the QR code or enter the access code.
3. Select the CAST icon on the mobile 

Content broadcast



BROADCAST CONTENT

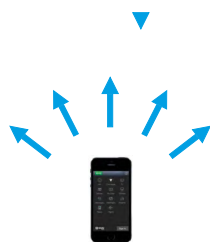
Select the desired platform and share the broadcast from mobile to TV.

Cast Connect solution components

From physical installation to configuration and integration with your existing systems.

Server

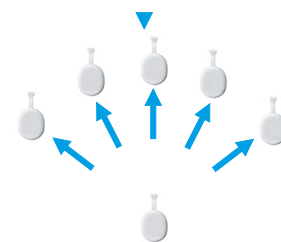
REF. 8477
REF. 8441
REF. 8478



Guest network

VLAN net  VLAN X net

CAST CONNECT server



Wired network or hidden WiFi SSID



Intuitive and easy to use



Hotel Fagor

1. Connect to Wi-Fi



Wi-Fi access

2. Scan QR Code



or use web browser
10.146.0.11/cast Code: 0gbr

3. Open Cast enabled APP

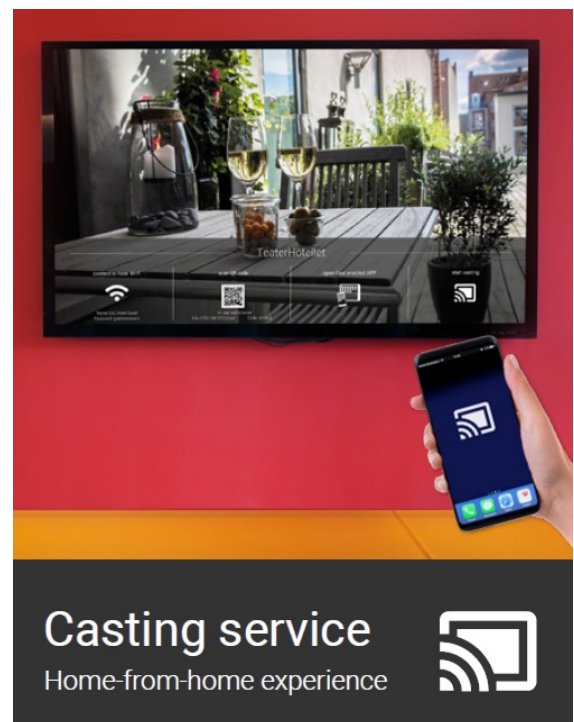


4. Start casting



Select: **Dormitorio**

- By following the instructions on the TV, the user can easily connect to the TV in his room.
- The user does not have to enter his or her credentials on the Chromecast.
- The privacy system will take care of deleting the guest's data.
- On the home screen, the hotelier can insert his promotional video, with images, videos from different sources, web pages, widgets..., programming the display time of each one.
- From the server, you can get information, how many Chromecast are connected, how many are registered, the number of rooms that are casting, the average wifi signal, system alarms, which are the most watched programmes, how long the cast has been used during the day....



CHROMECAST with GOOGLE TV HD & 4K UHD series

- Streaming entertainment, on your TV
- Voice search
- Watch movies, series and Netflix in 4K with HDR



MODEL	Chromecast 4K UHD	Chromecast HD
CPU	AmlogicS905D3	Amlogic S805X2
	(1.9GHz quad-core ARM Cortex-A55) and Mali-G31 MP2 GPU	(quad-core ARM Cortex-A35)
Memory	2GB DDR3L	1.5GB DDR3L
Capacity	8GB	
Display	Up to 4K UHD at 60 fps	Up to 1080p HDR at 60 fps
Conectivity	Wi-Fi 5 (5GHz)	
	Wi-Fi 4 (2.4GHz)	
	Bluetooth4.2	
	Ethernet (via adapter)	
System	Android TV	
Streaming support	all services	
Power	USB-C (requires power adaptor)	
Dimensions	16.2x.61 x1.25cm	
Weight	56.7g	55g

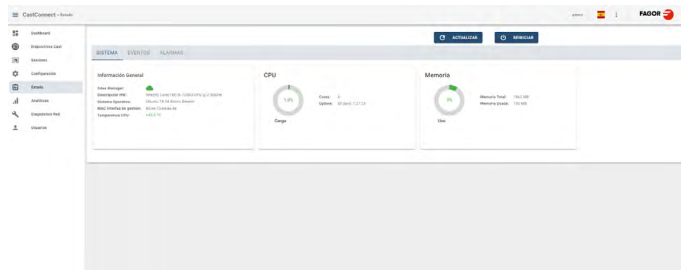
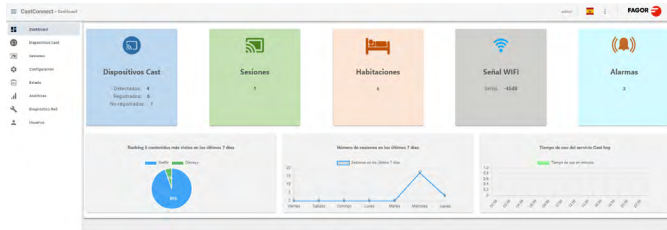
REF.	MOD.	DESCRIPTION
8477	Cast Connect 60	Cast Connect server up to 60 rooms
8441	Cast Connect 300	Cast Connect server up to 300 rooms
8478	Cast Connect 2000	Cast Connect server up to 2000 rooms
8476	Chromecast v4 + config + castlock	Chromecast v4 HD. Includes factory device configuration and castlock
10033	Chromecast v4 UHD 4K + config + castlock	Chromecast v4 UHD 4K. Includes factory device configuration and castlock
8490	Cast Connect Server 19" bracket	Support bracket for installation of Cast Connect server 300/2000
10511	ROR 301 R	Router
8456	Cast Connect Protect 1 year	Includes licence, updates and NBD line 2&3 FMS support.



Cast Connect 60

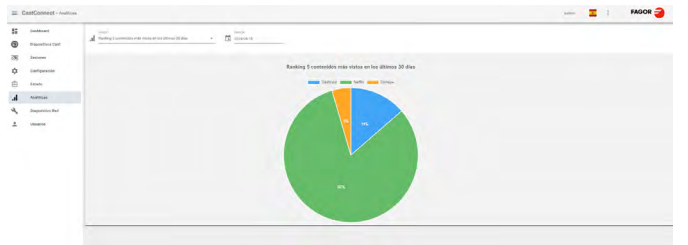
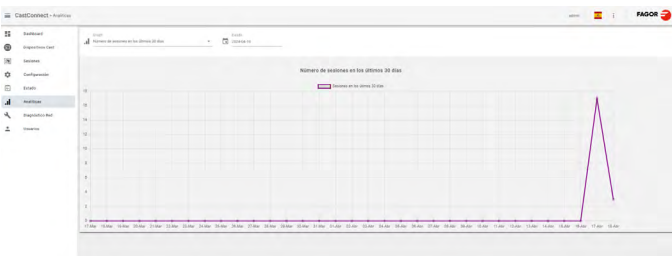
Cast Connect Server

Web management interface



FECHA	EVENTOS	ALARMAS				
16/06/2024 12:00:00	Dispositivo	Activado alarma	OK	Señal WiFi	Activado cast	App final
16/06/2024 12:00:00	Dispositivo	Activado alarma	OK	Señal WiFi	Activado cast	App final
16/06/2024 12:00:00	Dispositivo	Activado alarma	OK	Señal WiFi	Activado cast	App final
16/06/2024 12:00:00	Dispositivo	Activado alarma	OK	Señal WiFi	Activado cast	App final
16/06/2024 12:00:00	Dispositivo	Activado alarma	OK	Señal WiFi	Activado cast	App final
16/06/2024 12:00:00	Dispositivo	Activado alarma	OK	Señal WiFi	Activado cast	App final
16/06/2024 12:00:00	Dispositivo	Activado alarma	OK	Señal WiFi	Activado cast	App final
16/06/2024 12:00:00	Dispositivo	Activado alarma	OK	Señal WiFi	Activado cast	App final
16/06/2024 12:00:00	Dispositivo	Activado alarma	OK	Señal WiFi	Activado cast	App final
16/06/2024 12:00:00	Dispositivo	Activado alarma	OK	Señal WiFi	Activado cast	App final

FECHA	EVENTOS	ALARMAS				
16/06/2024 12:00:00	Dispositivo	Activado alarma	OK	Señal WiFi	Activado cast	App final
16/06/2024 12:00:00	Dispositivo	Activado alarma	OK	Señal WiFi	Activado cast	App final
16/06/2024 12:00:00	Dispositivo	Activado alarma	OK	Señal WiFi	Activado cast	App final
16/06/2024 12:00:00	Dispositivo	Activado alarma	OK	Señal WiFi	Activado cast	App final
16/06/2024 12:00:00	Dispositivo	Activado alarma	OK	Señal WiFi	Activado cast	App final
16/06/2024 12:00:00	Dispositivo	Activado alarma	OK	Señal WiFi	Activado cast	App final
16/06/2024 12:00:00	Dispositivo	Activado alarma	OK	Señal WiFi	Activado cast	App final
16/06/2024 12:00:00	Dispositivo	Activado alarma	OK	Señal WiFi	Activado cast	App final
16/06/2024 12:00:00	Dispositivo	Activado alarma	OK	Señal WiFi	Activado cast	App final
16/06/2024 12:00:00	Dispositivo	Activado alarma	OK	Señal WiFi	Activado cast	App final



The 'Configuración' page allows for system customization. It includes sections for 'Datos de información', 'Imagen por defecto Home', and 'Imagen de fondo'. The 'Imagen de fondo' section shows a preview of a landscape image.



Fagor Electrónica, S.Coop.
San Andrés, s/n.
E-20500 Mondragón (Spain)
Tel.: 943 712526
Fax: 943 712893
E-mail: rf.sales@fagorelectronica.es
www.fagorelectronica.com

Donostia Ibilbidea 28 .
20115 Astigarraga - Gipuzkoa
España
Tel.: +34 943 44 89 44
www.ikusitv

